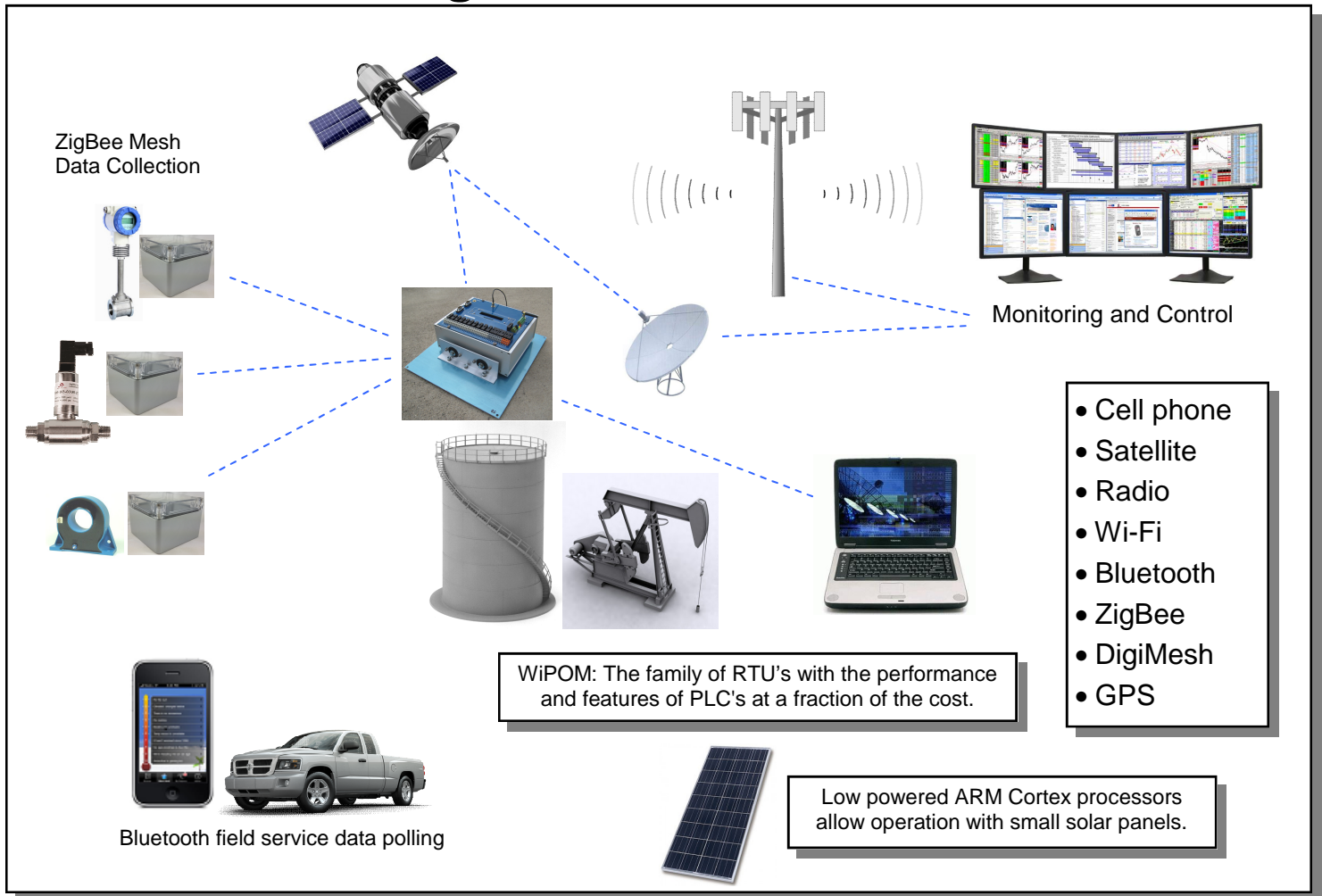
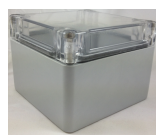





Remote Monitoring and Control: The Next Generation



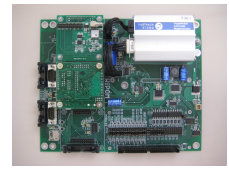
Most advanced and proven technology and performance, with over 5,000 WiPOM units in the field in industrial and energy applications, reliably operating 24/7 in severe environments.



nanoWiPOM
Lowest cost, lowest power for simple requirements



WiPOM
Maximum features and options, ruggedized



Single Board & Custom Remote Monitors

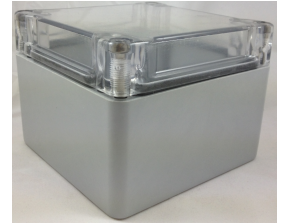
Features and Options include: Data logging, GPS, accelerometers, "off the shelf plug & play" peripherals, open operating systems, most advanced 32 bit processors, vibration protection, plus many more. See WiPOM Selection Guide for details.





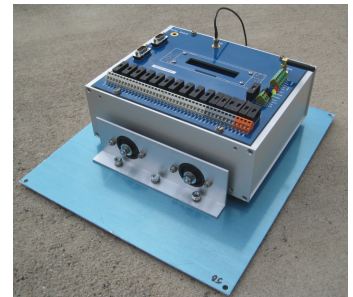
nanoWiPOM

The nanoWiPOM offers features and options usually found on more expensive RTU's, yet has a low-cost and low-power design for remote locations where power is scarce. Major features and options include fast STM32 processor, 8MB log memory (expandable to 2GB), RS232, RS485, GPRS/CDMA, USB, 2 Analog Inputs, 4 Digital Inputs, 2 Digital Outputs, removable screw terminals, NEMA 4X Enclosure, compact size and low power (battery operation optional).

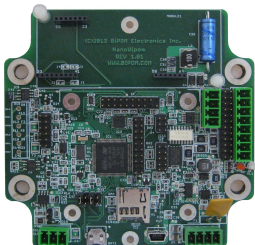


WiPOM

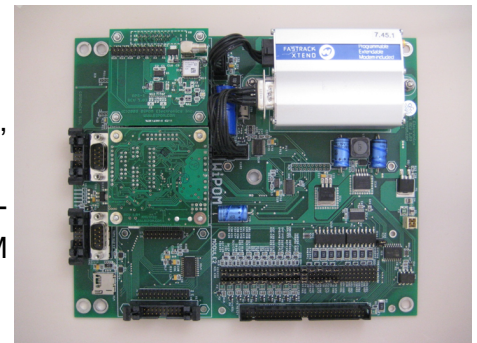
The WiPOM provides the performance, standard features, and more options to handle the most complex and unique requirements at the most economical cost. Major features and options include the fast STM32 processor, 2GB log memory, dual RS232, RS485, GPRS/CDMA, optional Satellite modem, USB, 10 Analog Inputs, 4 Digital Inputs, 2 Digital Outputs, ruggedized aluminum enclosure, multi-axis vibration mounts, vibration-resistant Wago™ terminals, low power.



Single Board & Custom



Optimized for low-cost, low-power and flexible options, board-level solutions are ideal for adding remote monitoring capability to existing systems and enclosures, such as instrument panels. Both nanoWiPOM and WiPOM are available as board offerings as well as custom versions.

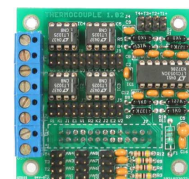


Option Boards (off-the-shelf, in stock)

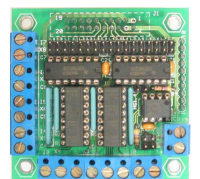
- SocketModem®
- Wi-Fi
- Bluetooth®
- ZigBee® and DigiMesh®
- Motor Controller
- Battery Pack
- Analog and Digital I/O
- Relays
- Thermocouples
- Optoisolators
- Additional Serial Ports
- LED, LCD and OLED Displays



Temperature/Humidity Board



4-channel Thermocouple Board (E,J,K,R,S,T)



9-channel Optoisolator Board

BiPOM Electronics, Inc., founded in 1984 has become the world leader in microcontroller applications for industrial, commercial, and the energy industries. BiPOM has complete engineering, design, development/testing and manufacturing capability to provide customers with concept development, prototypes, production units, field deployment, continuing technical support, and follow-on product improvement/development.