

GadgetPC

Single Board Computer

USB Linux console

Document Revision: 1.01

Date: 8 July, 2011



BiPOM Electronics, Inc.

16301 Blue Ridge Road, Missouri City, Texas 77489
Telephone: 1-713-283-9970 Fax: 1-281-416-2806
E-mail: info@bipom.com
Web: www.bipom.com

All trademarked names in this manual are the property of respective owners.
© 2009 BiPOM Electronics, Inc.

1. Overview

Thank you for your purchase of the GadgetPC Single Board Computer. GadgetPC is a powerful computer board that is capable of running high-level operating systems such as Linux. This document is for users who want to use USB device port of GadgetPC as Linux console. GadgetPC board will appear in Windows system as a virtual COM port.

2. Setup.

Please run Linux on your GadgetPC.

More information can be obtained from **GadgetPC Quick Start Guide**.

<http://www.bipom.com/documents/boards/gadgetpc/GadgetPC Quick Start Guide.pdf>

3. Virtual Serial Port

GadgetPC Linux Control Panel release provides a precompiled Linux kernel with /dev/ttyGS0 device. This device provides a virtual serial port over USB interface.

You can check if the device is present in the system typing the following command

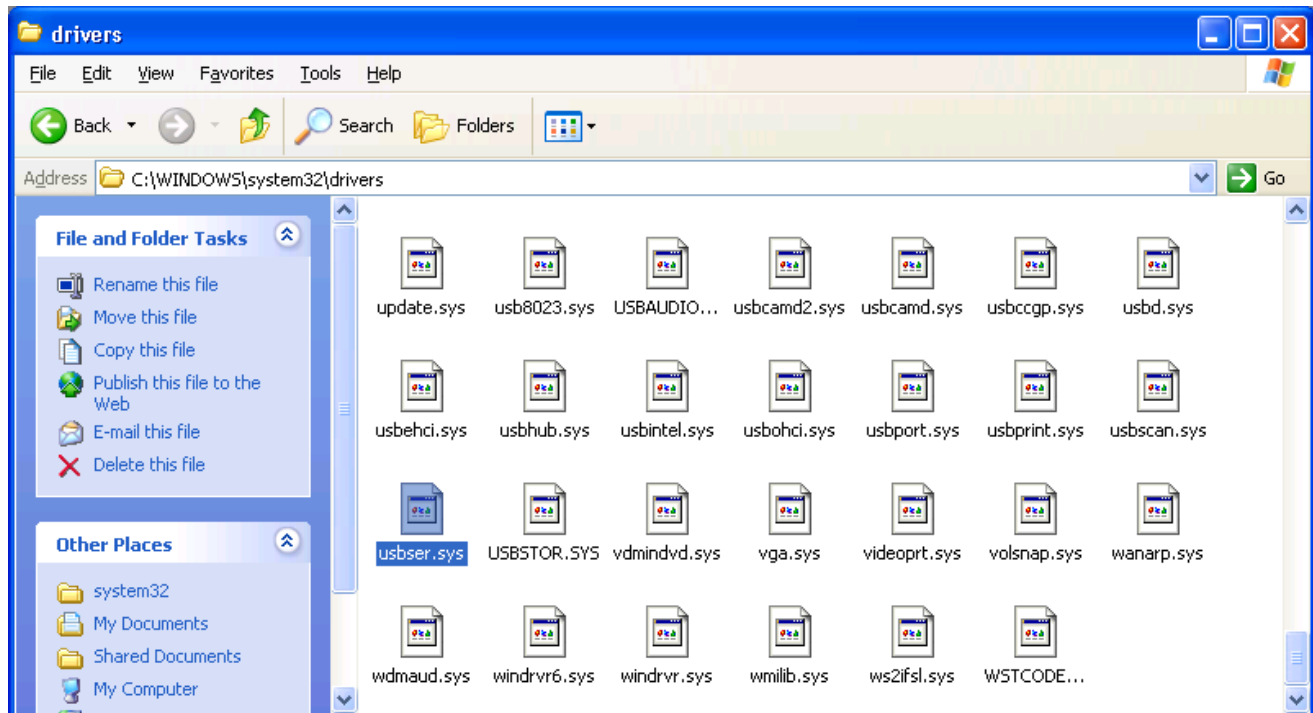
```
[root@GadgetPC /]$ls -l /dev | grep GS
crw-rw-rw- 1 root root 252, 0 Jan 1 00:35 ttyGS0
[root@GadgetPC /]$
```

Linux console is running on the virtual serial port due to a special record in the **inittab** file.

```
[root@GadgetPC /]$cat /etc/inittab
::sysinit:/etc/rc.d/rc.s
::respawn:/bin/ash
::askfirst:/bin/ash
::ctrlaltdel:/bin/umount -a -r
[root@GadgetPC /]$
```

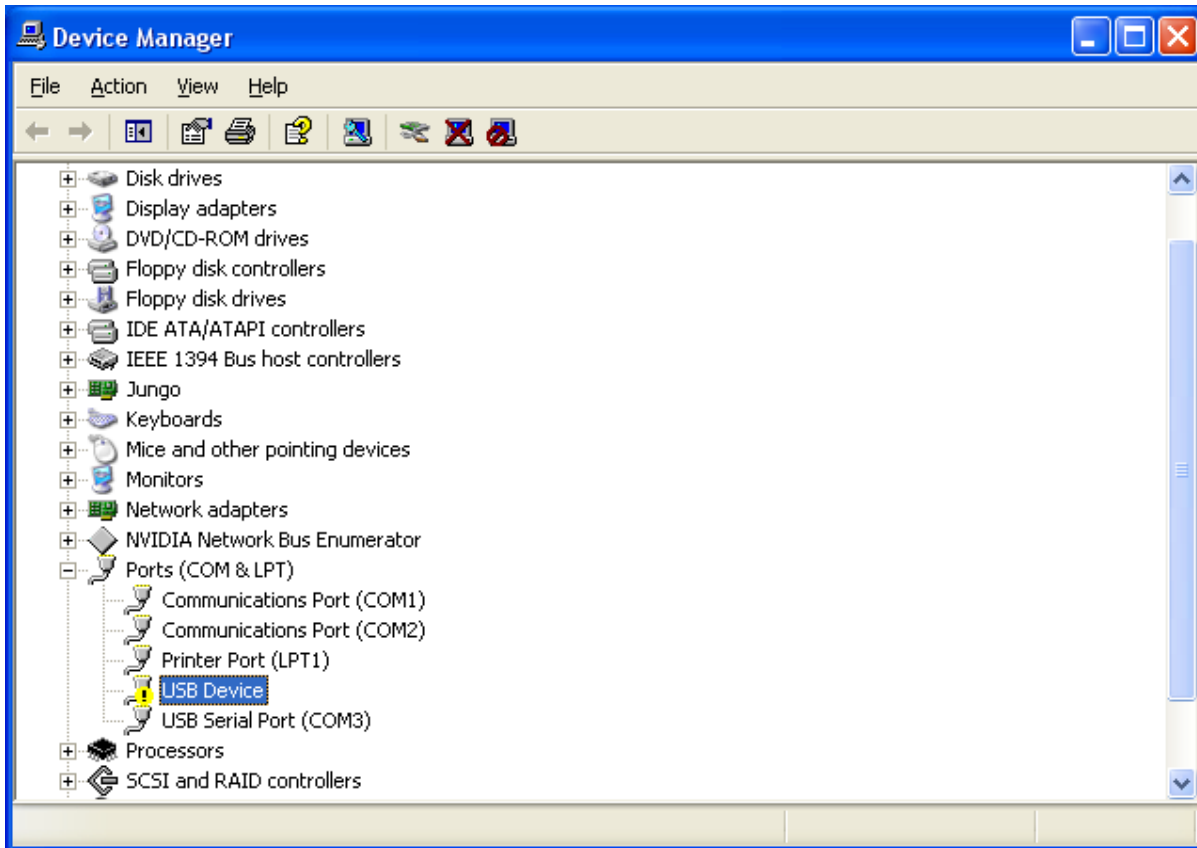
4. Windows driver.

As the 1st step please check if **usbser.sys** file is present under C:\WINDOWS\system32\drivers



Copy the **usbser.sys** file from C:\bipom\devtools\GadgetPC\win_drivers\usb_serial if it is absent.

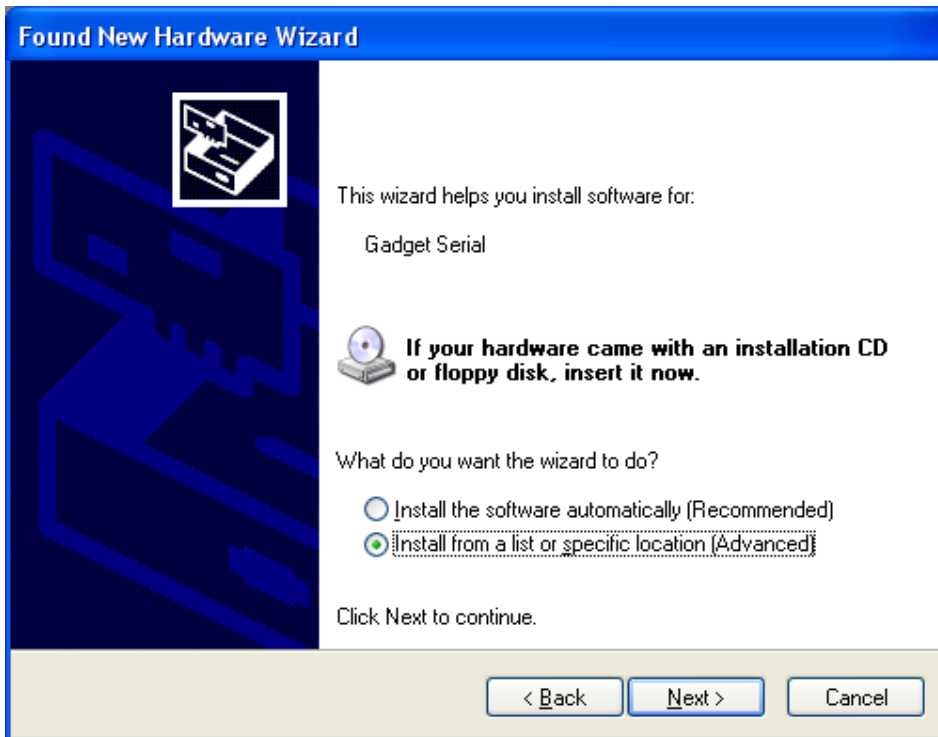
When GadgetPC is powered from a PC USB host port it will be recognized as UNKNOWN USB device.



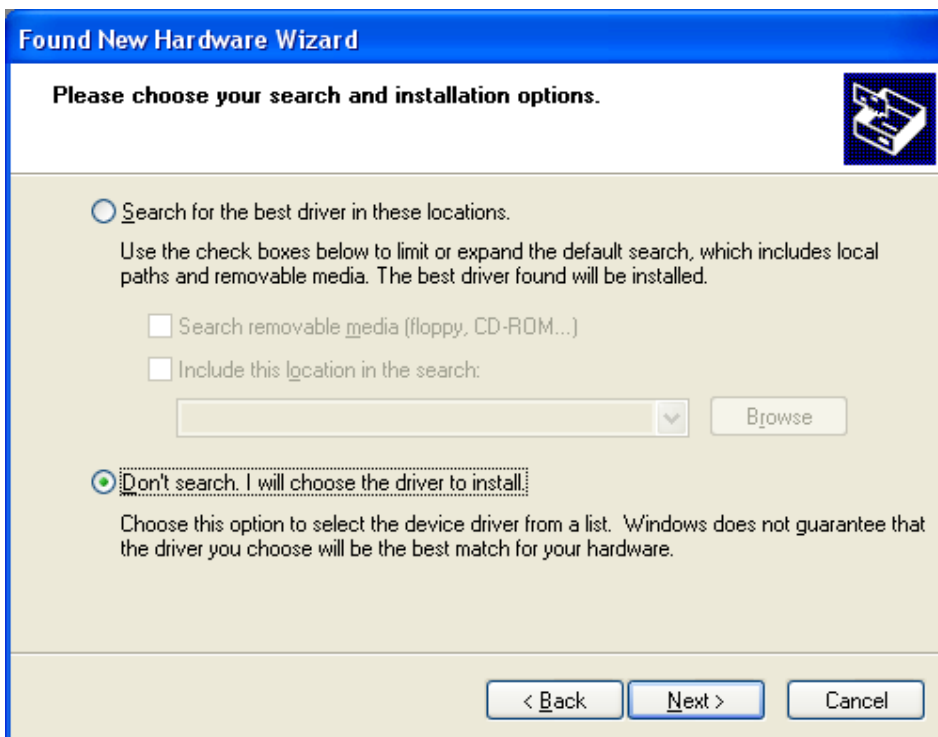
Install the driver.



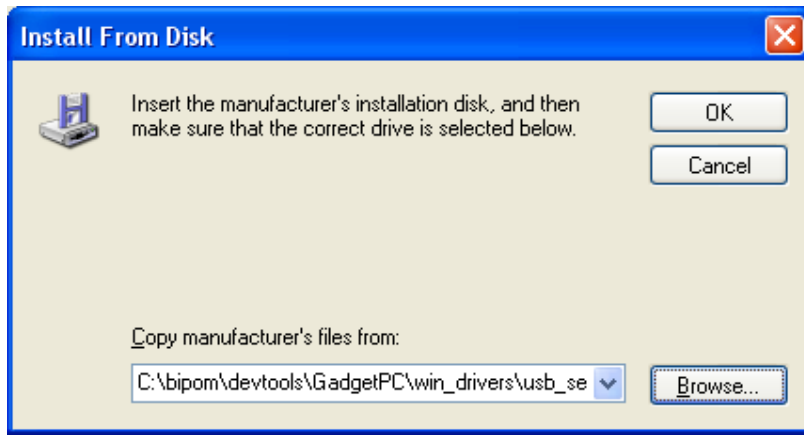
Press Next



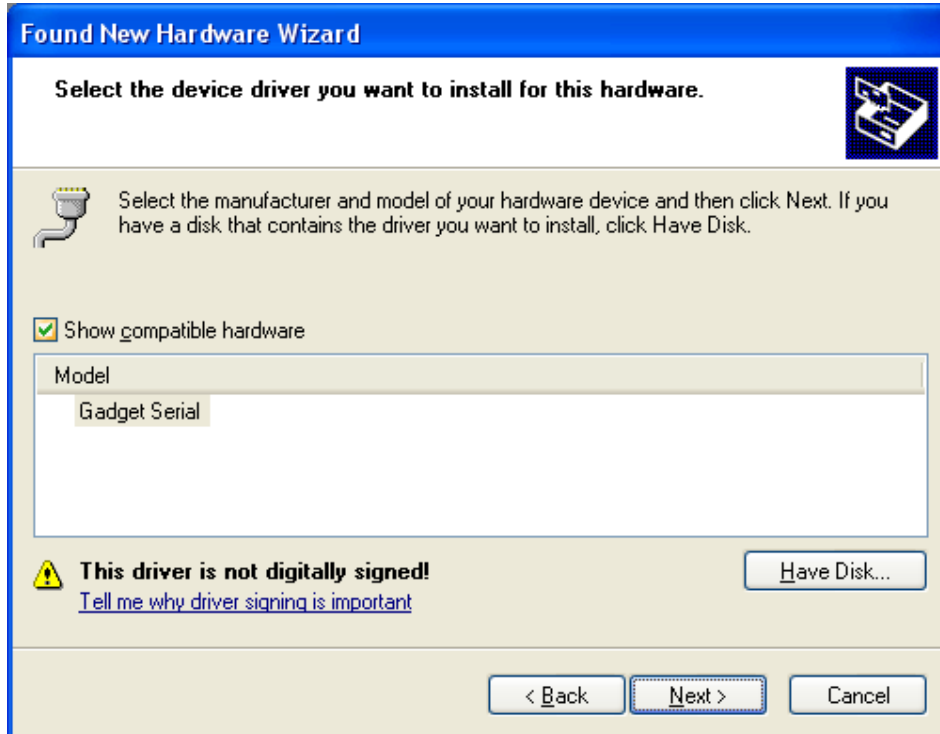
Press Next



Press Next



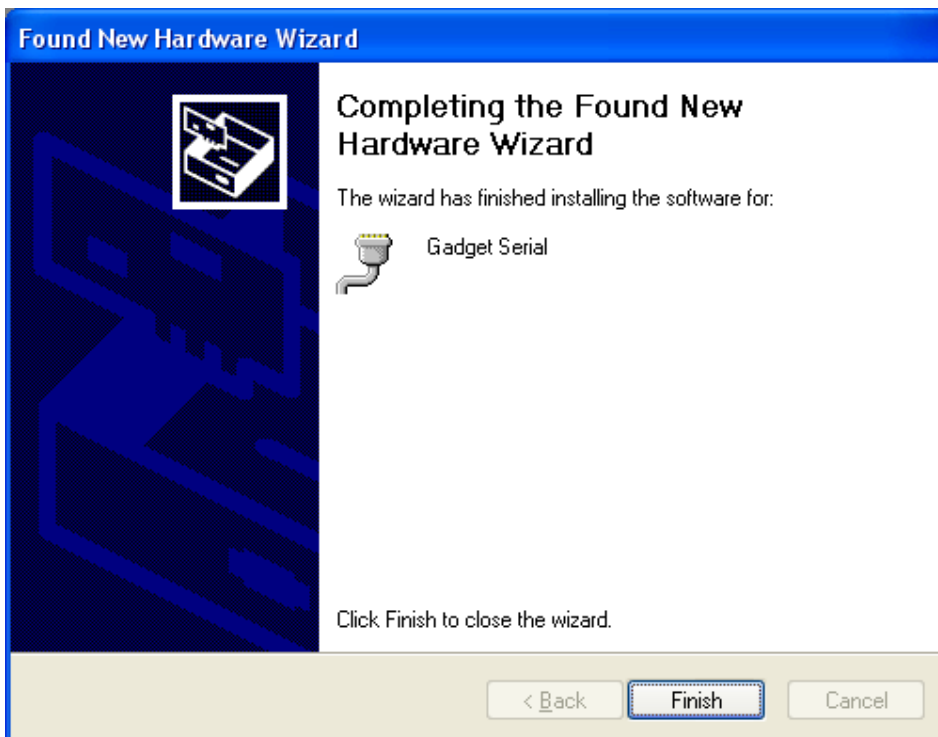
Press OK



Press Next

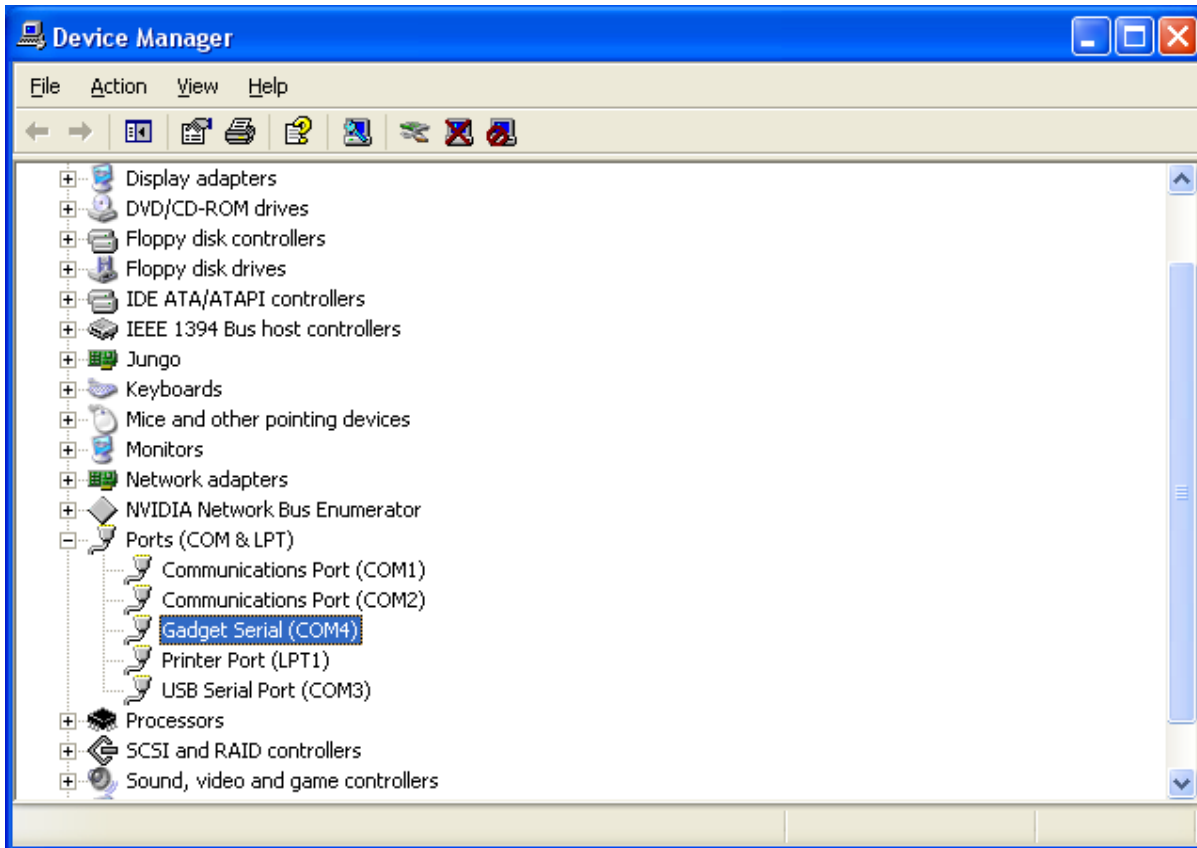


Press Continue Anyway



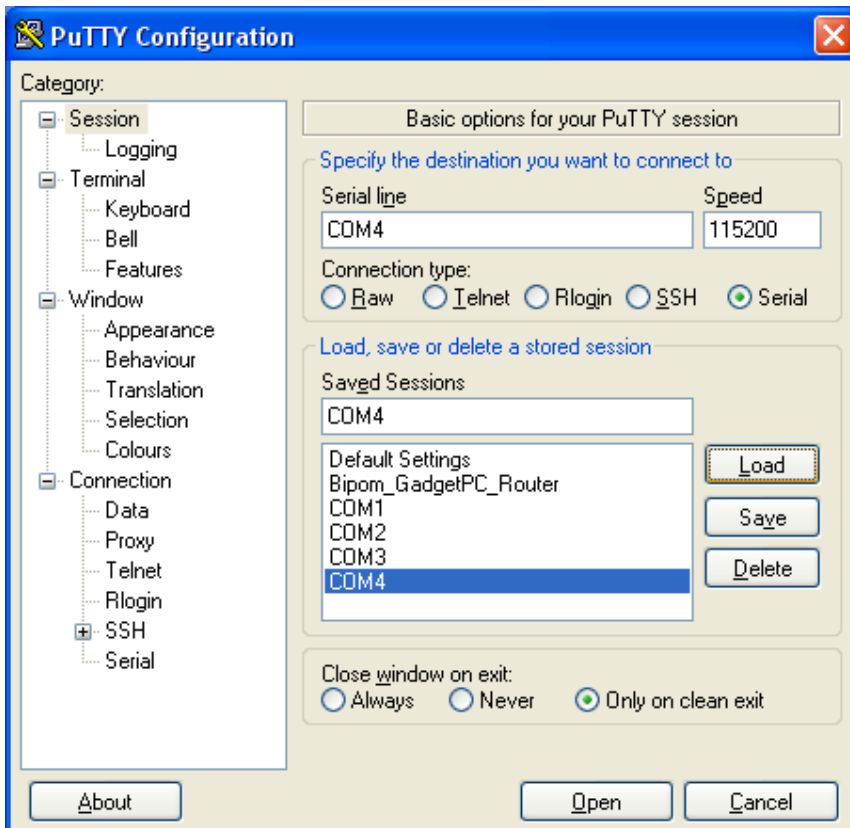
Press Finish

Re-check if a virtual COM port is present in the system



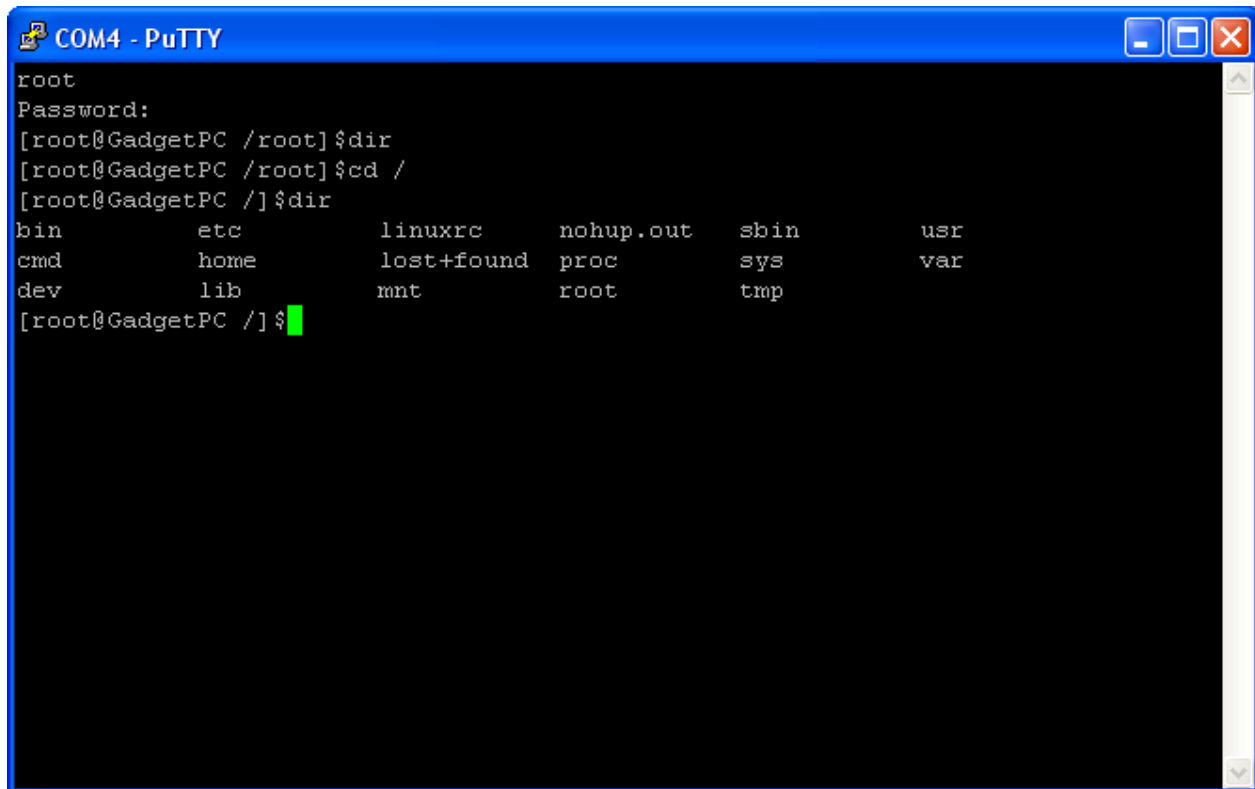
5. Linux console.

Use any terminal program (putty, hyperterminal, etc.) to connect to a virtual COM port. Speed is 115200 bps.



Type **root** as a login name, then press ENTER.

Type **newpassword** (you may use your password key) as a password, then press ENTER.



The image shows a PuTTY terminal window titled "COM4 - PuTTY". The terminal displays the following text:

```
root
Password:
[root@GadgetPC /root]$dir
[root@GadgetPC /root]$cd /
[root@GadgetPC /]$dir
bin          etc          linuxrc     nohup.out  sbin        usr
cmd          home        lost+found  proc       sys         var
dev          lib         mnt        root       tmp
```

The prompt is now `[root@GadgetPC /]$` with a green cursor.