

MINI-MAX/ARM-C

Micro-controller System based on ARM7 Microcontroller

The ARM micro-controller, first introduced by ARM Ltd., is one of the most popular microcontrollers in use today with applications ranging from industrial, medical, home automation, cell phones, PDA's, computers to automotive.

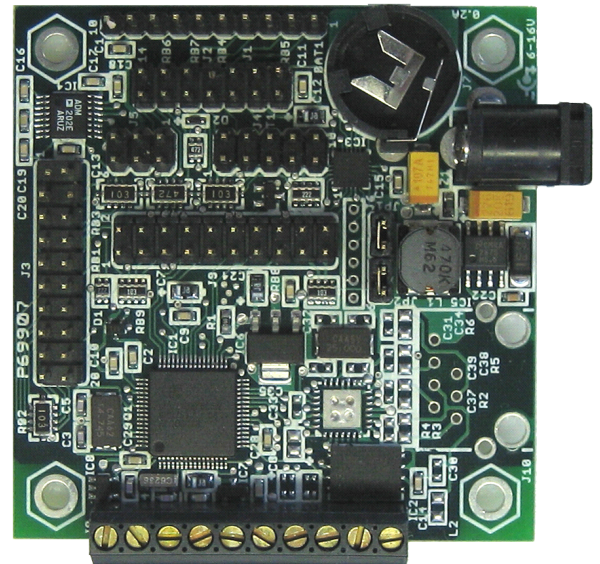
MINI-MAX/ARM-C is a powerful, yet easy-to-use microcomputer system based on the latest generation of flash-based ARM micro-controllers from NXP (Philips).

MINI-MAX/ARM-C is fully assembled and ready to use out of the box. MINI-MAX/ARM-C has 512K of flash memory that can store thousands of lines of C or ARM Assembly language programs. Clock speed is close to 60 MHz. Programs are downloaded into the MINI-MAX/ARM-C with a personal computer through the RS232 serial (COM) port or JTAG port. Downloads typically take only few seconds.

MINI-MAX/ARM-C is fully backed by warranty, technical support and application assistance from BiPOM Electronics. Wide range of peripheral boards and accessories are available.

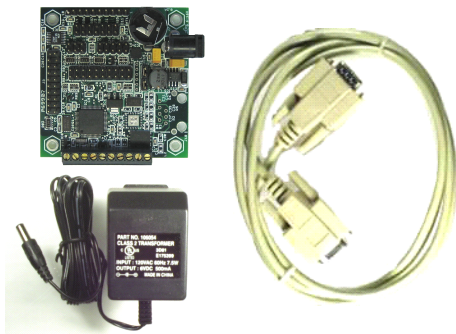
MINI-MAX/ARM-C Board Features:

- NXP LPC2138 micro-controller
- 512K Flash program memory, 32K RAM
- 1 Mbyte serial DataFlash
- Dual RS232 Serial Ports
- 32 Digital Input/Output Lines
- 5-Channel 10-Bit Analog/Digital Converter (ADC)
- LCD, keypad and expansion connectors
- In-system programming/debugging
- Powerful yet affordable development software options include Micro-IDE, GNUARM C Compiler, Keil and IAR C Compilers, serial loader.
- Unregulated 6-12 Volts DC operation.
- 60 MHz clock speed.
- Online Technical Manual and Circuit schematics are provided.
- 6 Volts DC Adapter, serial cable and serial downloader included.
- ARM7 Training Kit based on MINI-MAX/ARM-C is available.



Peripheral Boards

- DIO-1** I/O Expander Board
- TB-1** Training Board
- LED-1** LED Display Board
- PROTO-1** Prototyping Board
- RTC-1** Real-Time Clock Board
- MMC/RTC-1** Flash Multimedia Card Board
- DAQ-2543** 12-bit Analog input board
- TERMINAL-1** Terminal Block Board
- LCD242** Liquid Crystal Display
- VFD202** Vacuum Fluorescent Display
- KP1-4X4** and **KP1-3X4** Matrix Keypads
- X10-1** X10 Interface Module
- RELAY-2** Relay Board
- RELAY-4** Relay Board
- MOTOR-1B** Stepper Motor Control Board



More details and Technical Manual are available for download at www.bipom.com/products/us/319526.html
BiPOM Electronics • Phone: 1-713-283-9970 • Fax: 1-281-416-2806 • E-mail: info@bipom.com • Web: www.bipom.com
All trademarked names in this brochure are the property of respective owners.