



DigiView™

DigiView™, Logic Analyzer is professional quality, highly portable and very affordable. DigiView uses a deep capture buffer and real-time hardware compression to achieve long period captures without reducing resolution. DigiView models have the great capture time on very sparse data. **DV3100** can be up to 347 days at 10ns, **DV3400** can be up to 260 days at 2.5ns.

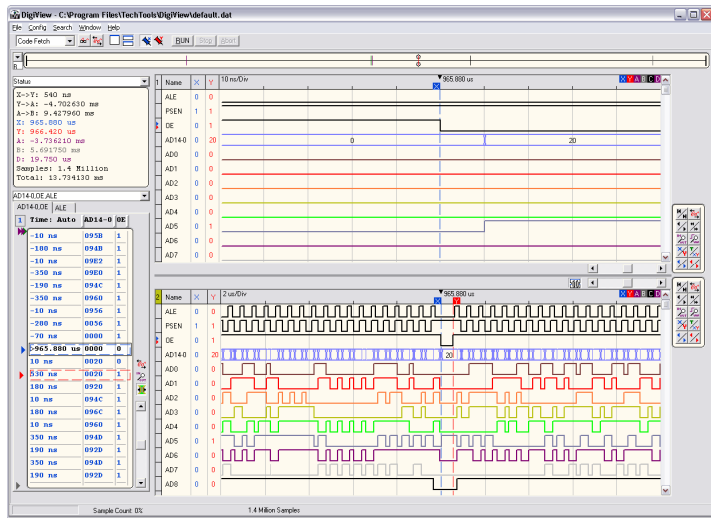
Software Features:

- Add descriptive signal identifiers
- Ability to decode serial signals such as I2C, RS-232 and SPI
- Signal grouping for bus identification and values
- Save/load data and settings for later analysis
- Split View Graphical waveform display with Zoom and Scroll
- Auto-snap & repeat cursor functions
- Quick Select, Drag & Snap markers
- Multi-Signal Data Tables
- List views for Specialized signals
- Fast Searches with Duration Matches
- Sequential Searches for Specialized Signals
- Search Manager for multiple consecutive searches
- Tabbing & Docking Windows
- Birds-eye View for fast navigation
- Configurable Data Export Function
- Specialized Signal Exports
- Data Table "Transition Compression" feature



DV3100 Hardware Features:

- 18 Channels @ 100 MHz (10 ns)
- Automatic Real time Hardware Compression (Tri-mode)
- Eliminates Resolution vs. Depth tradeoffs
- Advanced Universal Match Circuits (8)
- Selectable Match Types (9)
- Flexible, Cascadable Sequencers (4 x 4)
- Sequencer Counters (16 @ 1M count each)
- +0.5 to +2.8 Volts Adjustable Threshold
- Maximum continuous voltage $\pm 20V$ all channels
- Ground current protection (ground lead to +- voltage) $\pm 12V$
- Graphical Trigger Layout(s)
- USB Powered
- USB 2.0 with USB 1.1 compatibility
- All Cables, Clips (qty. 20) and software included



DV3400 Hardware Features:

- 36 Channels @ 200 MHz (5ns)
- 18 Channels @ 400 MHz (2.5 ns)
- Multiple, Automatic Compression techniques
- Eliminates Resolution vs. Depth tradeoffs
- Advanced Universal Match Circuits (8)
- Selectable Match Types (9)
- Flexible, Cascadable Sequencers (4 x 4)
- Sequencer Counters (16 @ 1M count each)
- ± 6 Volts Adjustable Threshold (2)
- Maximum continuous voltage $\pm 50V$ all channels
- Ground current protection (ground lead to +- voltage) $\pm 12V$
- Graphical Trigger Layout(s)
- Continues operation when PC powers off
- Trigger-Out BNC connection
- External Power Supply
- USB 2.0 with USB 1.1 compatibility
- All Cables, Clips (qty. 40) and software included