

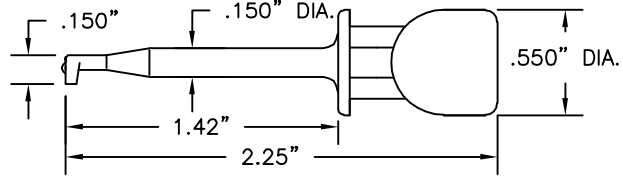
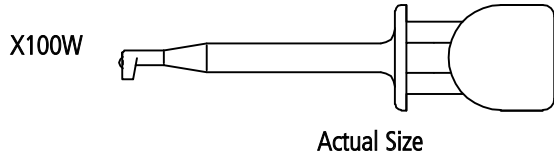
# E-Z-MINI-HOOK: X100W

| Part Number   | Description              |
|---------------|--------------------------|
| X100W-(color) | Mini-Hook Test Connector |

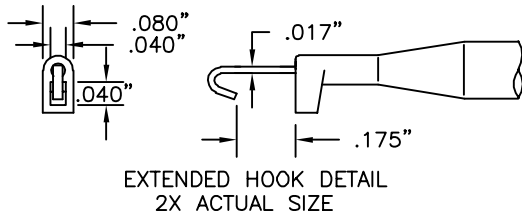
### Standard Construction:

Durable nylon body and plunger. One-piece, gold-plated beryllium copper conductor and hook. Tip design permits hook up vertically or horizontally. Hook fits over component leads up to .040" (1.016mm) diameter. Stainless steel compression coil spring provides approximately 12 ounces (340 grams) contact pressure. Part is field serviceable (see page 1).

**Colors:** Available in 10 colors. See inside back cover for details.

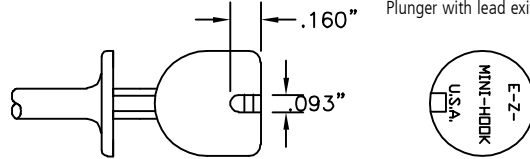


### STANDARD SQUARE HOLE TIP



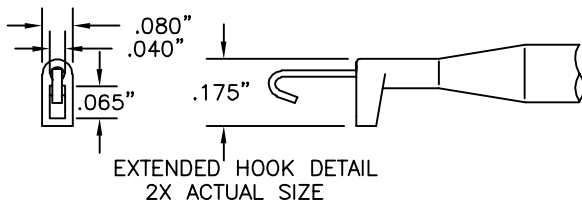
### STANDARD PLUNGER

Plunger with lead exit hole detail



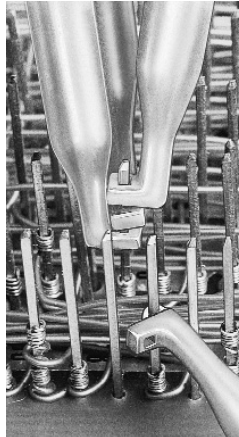
HOOKS

### X100W RECTANGULAR HOLE TIP



| Part Number    | Description                    |
|----------------|--------------------------------|
| X100W2-(color) | Rectangular Hole Tip Mini Hook |

**Construction:** Identical to standard X100W model except tip has been extended to provide .065" x .040" hole for vertical connection over rectangular wire wrapped pins.



### X100W NON-MAGNETIC

| Part Number      | Description  |
|------------------|--------------|
| X100W-NM-(color) | Non-Magnetic |

**Construction:** Identical to standard X100W model, except spring is non-magnetic.

**Note:** Add -NM after any X100W style part number to indicate non-magnetic X100W hook.

### X100W HIGH TEMPERATURE MODELS

| Part Number    | Description                |
|----------------|----------------------------|
| X100WX-(color) | High Temperature Mini-Hook |

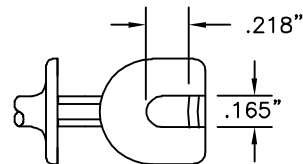
**Construction:** Identical to standard X100W model except body and plunger are molded of mineral reinforced nylon for maximum temperature of 150°C (300°F) over short time cycles. Over extended time periods, maximum temperature is 122°C (250°F). Resistant to a wide variety of oils, solvents and chemicals.

| Part Number     | Description                |
|-----------------|----------------------------|
| X100WXH-(color) | High Temperature Mini-Hook |

**Construction:** Identical to standard X100W model except body and plunger are molded of glass reinforced nylon for maximum temperature of 175°C (350°F) over short time cycles. Over extended time periods, maximum temperature is 150°C (300°F). Resistant to a wide variety of oils, solvents and chemicals.

**Colors:** Black and white.

### X100W PLUNGER FOR HEAVY LEAD WIRE



| Part Number     | Description                              |
|-----------------|--|
| X100WA-(color)  | Heavy Lead Plunger, Square Hole Tip      |
| X100W2A-(color) | Heavy Lead Plunger, Rectangular Hole Tip |

**Construction:** Identical to standard X100W model except lead exit hole in plunger has been increased to .165" (4.19mm) wide to accommodate heavier gauge lead wires.

# E-Z-MINI-HOOK: XR

| Part Number | Description                 |
|-------------|-----------------------------|
| XR-(Color)  | Mini-Hook XR Test Connector |

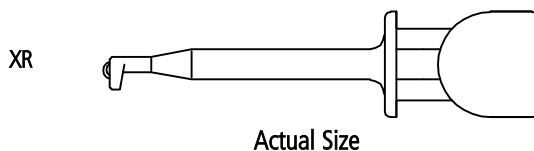
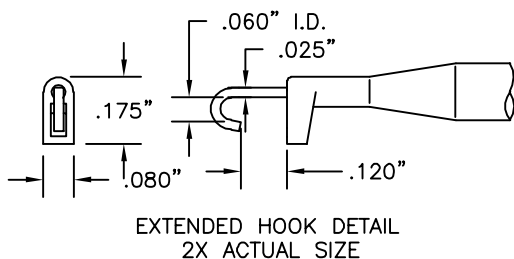
### Standard Model Construction:

Body and plunger made of durable nylon. One-piece beryllium copper, Gold-plated conductor and hook. Contact thickness of hook is .025" (.635mm). Hook fits over component leads up to .059" (1.5mm) diameter. The hook is insulated to a single contact point to assure accurate readings. Stainless steel compression coil spring provides approximately 12 ounces (340 grams) contact pressure.

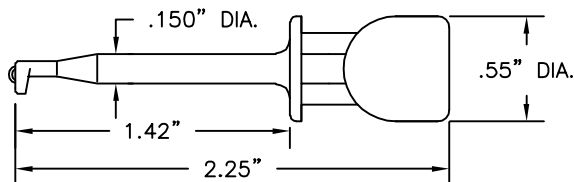
Part is field serviceable (See page 1).

**Colors:** Available in 10 colors. See inside back cover for details.

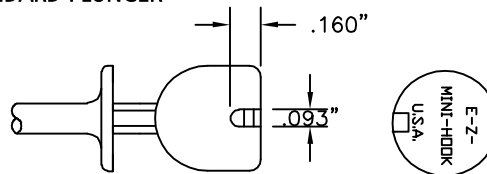
### STANDARD RECTANGULAR HOLE TIP



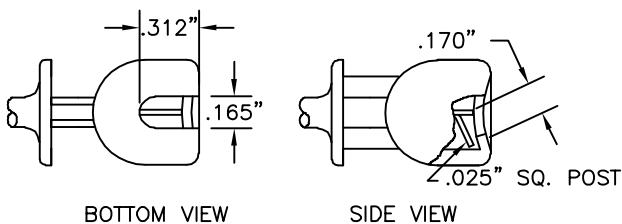
The mid-size XR hook bridges the gap between the general purpose X100W and the macro-hook XH model. The hook thickness has been increased for added strength and durability and widened to fit over larger components.



### STANDARD PLUNGER



### XR25 WITH .025" SQUARE PIN



| Part Number  | Description                        |
|--------------|------------------------------------|
| XR25-(color) | Mini-Hook XR with .025" Square Pin |

**Construction:** Identical to standard XR model except a square post is accessible through lead exit hole in plunger. Post is designed for easy snap-on connection to .025" (.635mm) square or .030" (.762mm) diameter patch cords.

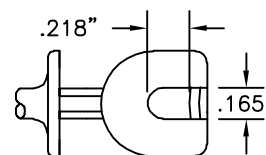
**E-Z-Hook lead options:** Use with .025" or .030" socket patch cords on pages 52-53.

### XR WITH HEAVY SPRING

| Part Number | Description                    |
|-------------|--------------------------------|
| XRZ-(color) | Mini-Hook XR with Heavy Spring |

**Construction:** Identical to standard XR model except stainless steel compression coil spring provides approximately 27 ounces (765 grams) contact pressure.

### XR WITH PLUNGER FOR HEAVY LEAD WIRE



| Part Number | Description                      |
|-------------|----------------------------------|
| XRA-(color) | Mini-Hook XR for Heavy Lead Wire |

**Construction:** Identical to standard XR model except lead exit hole in plunger has been increased to .165" (4.19mm) to accommodate heavier gauge lead wires.

### XR NON-MAGNETIC

| Part Number     | Description                      |
|-----------------|----------------------------------|
| XR-NM-(color)   | Non-Magnetic XR                  |
| XR25-NM-(color) | Non-Magnetic .025" Square Pin XR |
| XRA-NM-(color)  | Non-Magnetic Heavy Lead XR       |

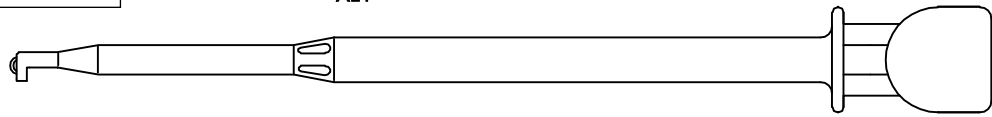
**Construction:** Identical to standard XR model except spring is non-magnetic.

**Note:** Add -NM after any XR style part number to indicate non-magnetic XR hook. (ex. XR -NM - color).

# E-Z-MINI-HOOK: XL1

| Part Number | Description              |
|-------------|--------------------------|
| XL1-(color) | Mini-Hook Test Connector |

XL1



Actual Size

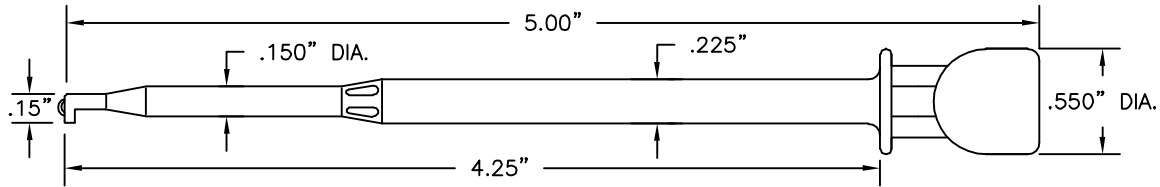
### Standard Model Construction:

Durable nylon body and plunger.

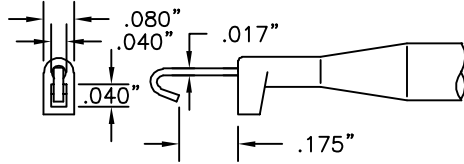
Body is 5" (127mm) long to reach through wiring nest up to 4" (101.6mm) deep. One-piece, gold-plated beryllium copper conductor and hook. Hook fits over component leads up to .040" (1.016mm) diameter. Square hole tip design permits easy hook up either vertically or horizontally. Stainless steel compression coil spring provides approximately 12 ounces (340 grams) contact pressure.

Part is field serviceable (see page 1).

**Colors:** Available in 10 colors. See inside back cover for details.

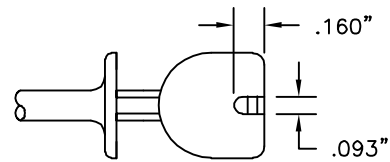


### STANDARD SQUARE HOLE TIP



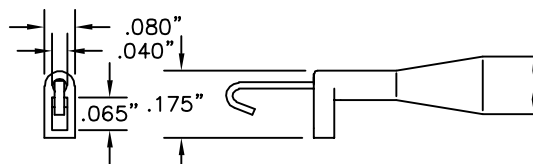
EXTENDED HOOK DETAIL  
2X ACTUAL SIZE

### STANDARD PLUNGER



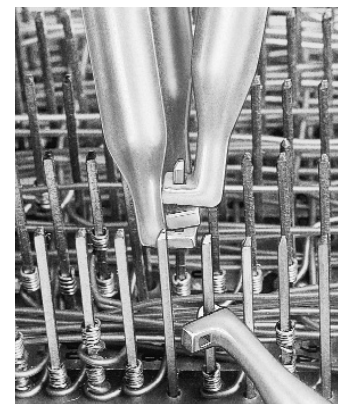
### XL1 RECTANGULAR HOLE TIP

| Part Number | Description                    |
|-------------|--------------------------------|
| XL2-(color) | Rectangular Hole Tip Mini-Hook |



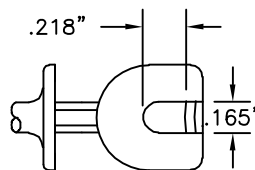
EXTENDED HOOK DETAIL  
2X ACTUAL SIZE

**Construction:** Identical to standard XL1 model except tip has been extended to provide .065" x .040" hole for vertical connection over rectangular wire wrapped pins.



### XL1 PLUNGER FOR HEAVY LEAD WIRE

| Part Number  | Description                          |
|--------------|--------------------------------------|
| XL1A-(color) | Heavy Lead, Sq. Hole Tip Mini-Hook   |
| XL2A-(color) | Heavy Lead, Rect. Hole Tip Mini-Hook |



**Construction:** Identical to standard XL1 model except lead exit hole in plunger has been increased to .165" (4.19mm) to accommodate heavier gauge lead wires.

### XL1 NON-MAGNETIC

**Construction:** Identical to standard XL1 model except spring is non-magnetic.

**Note:** Add -NM after any XL style part number to indicate non-magnetic XL hook. (ex. XL1 -NM -color).

| Part Number     | Description                          |
|-----------------|--------------------------------------|
| XL1-NM-(color)  | Non-Magnetic, Sq. Tip                |
| XL2-NM-(color)  | Non-Magnetic, Rect. Tip              |
| XL1A-NM-(color) | Non-Magnetic, Heavy Lead, Square Tip |