



**SPECIFICATIONS
FOR VFD MODULE**

Matrix Orbital NO.	MOP-AV204A-BNNN-01J-3IN
---------------------------	--------------------------------

1. General Description

1.1 Application: Readout of computer, micro-computer, communication terminal and automatic instruments.

1.2 Construction: Single board display module consists of 80 characters (4 x 20) VFD, gate array which has character generator ROM, RAM and DC/DC converter.

1.3 Scope: Interface level is TTL-8/4 bit parallel and the module can be connected to the CPU bus directly. +5V single power supply is required.

2. Absolute Maximum Ratings

Parameter	Symbol	Min.	Typ.	Max.	Unit
Power Supply Voltage	V _{CC}	0	—	5.5	V _{DC}
Logic Input Voltage	V _I	V _{SS} -0.2	—	V _{CC} +0.3	V _{DC}

3. Electrical Ratings

Measuring Conditions : TA (Ambient temperature)=25 degree

Parameter	Symbol	Min.	Typ.	Max.	Unit	Condition	
Logic Input Voltage1 DB0-DB7	"H"	V _{IH}	V _{SS} +2.2	—	V _{CC}	V _{DC}	V _{CC} -V _{SS} = 5.0V
	"L"	V _{IL}	V _{SS}	—	V _{SS} +0.6		
Logic Input Voltage2 RS,R/W(WR),E(RD)	"H"	V _{IH}	0.7V _{CC}	—	V _{CC}	V _{DC}	
	"L"	V _{IL}	V _{SS}	—	0.3V _{CC}		
Power supply Voltage	V _{CC} -V _{SS}	4.75	5.00	5.25	V _{DC}	—	

4. Electrical Characteristics

Measuring Conditions: TA (Ambient temperature)=25degree, V_{CC}=5.0V_{DC}

Parameter	Symbol	Min.	Typ.	Max.	Unit	Condition	
Logic Output Voltage	"H"	V _{OH}	V _{CC} -0.6	-	-	V _{DC}	I _{OH} =-1.6mA
	"L"	V _{OL}	-	-	V _{SS} +0.6		I _{OL} =1.60mA
Power Supply Current 1	I _{CC1}	-	275	350	mA	Display ON	
Power Supply Current 2	I _{CC2}	-	8	15	mA	Display OFF	

Note: I_{CC1} shows the current at all dots in the screen are lighted.

Slow start power supply may cause a failure of Power-on reset which is explained in "8.2 Power-on reset". Less than 50mS power rising time is recommended.

I_{CC} might be anticipated twice as usual at power on rush.

5. Optical Specifications

Number of characters	: 80 (4 lines x 20 chars)
Matrix format	: 5 x 7dot
Display area	: 70.8 x 20.9 mm (X x Y)
Character size	: 2.4 x 4.7 mm (X x Y)
Character pitch	: 3.6 x 5.4 mm (X x Y)
Dot size	: 0.4 x 0.5 mm (X x Y)
Dot pitch	: 0.5 x 0.7 mm (X x Y)
Luminance	: Min. 350 cd/m ²
Color of illumination	: Green (Blue-green)

6. Environmental Specifications

Operating temperature	: -40 to +85 degree
Storage temperature	: -50 to +85 degree
Operating humidity	: 20 to 80 % RH (Non condensation)
Vibration (Non operation):	10 to 55 to 10 Hz(Frequency)
	1.0mm(Total Amplitude)
	30 min. (Duration)
	X, Y, Z each direction
Shock (Non operation)	: 539 m/S ² , 10mS

7. Functional Descriptions

7.1. Instruction table

Instruction	CODE										Time	Description	
	RS	R/W	DB7	DB6	DB5	DB4	DB3	DB2	DB1	DB0			
Display clear	0	0	0	0	0	0	0	0	0	0	1	1.8 ms MAX.	Clears all display and Sets DD RAM address 0 in the address counter.
Cursor Home	0	0	0	0	0	0	0	0	0	1	*	666nS	Sets DD RAM address 0 in the address counter. Also returns the display being shifted to the original position. DD RAM contents remain unchanged.
Entry Mode set	0	0	0	0	0	0	0	0	1	I/D	S	666nS	Sets the cursor direction and specifies display shift. These operations are performed during writing/reading data.
Display ON/OFF Control	0	0	0	0	0	0	0	1	D	C	B	666nS	Sets all display ON/OFF (D), cursor ON/OFF (C), cursor blink of character position (B).
Cursor or Display Shift	0	0	0	0	0	0	1	S/C	R/L	*	*	666nS	Shifts display or cursor, keeping DDRAM contents.
Function Set	0	0	0	0	0	1	IF	*	*	*	*	666nS	Sets data length (IF).
Brightness control	1	0	*	*	*	*	*	*	*	BR1	BR0	666nS	Accepts 1 byte data of just after "Function set" as brightness control data.

Instruction	CODE										Time	Description	
	RS	R/W	DB7	DB6	DB5	DB4	DB3	DB2	DB1	DB0			
CG RAM address setting	0	0	0	1	ACG					666nS	Sets the CG RAM address.		
DD RAM address Setting	0	0	1	ADD					666nS	Sets the DD RAM address.			
Busy flag & address reading	0	1	BF	ACC					666nS	Reads busy flag (BF) and address counter.			
Data writing to CG or DD RAM	1	0	Data writing					666nS	Writes data into CG RAM or DD RAM.				
Data reading from CG or DD RAM	1	1	Data writing					666nS	Reads data from CG RAM or DD RAM.				
	I/D = 1 : Increment I/D = 0 : Decrement S = 1 : Display shift enabled S = 0 : Cursor shift enabled S/C = 1 : Display shift S/C = 0 : Cursor move R/L = 1 : Shift to the right R/L = 0 : Shift to the left BR1,BR0 = 00 : 100% 01 : 75% 10 : 50% 11 : 25%											IF = 1 : 8-bits IF = 0 : 4-bits BF = 1 : Busy BF = 0 : Not busy	DD RAM: Display data RAM CG RAM: Character generator RAM ACG: CG RAM address ADD: DD RAM address ACC: Address Counter

Note:

* : Don't care.

7.2. Display Clear _

DB7	DB6	DB5	DB4	DB3	DB2	DB1	DB0	
0	0	0	0	0	0	0	1	01H

RS = 0

This instruction

1. Fills all location in the display data (DD) RAM with 20H (Blank character).
2. Clears the contents of the address counter to 0H.
3. Sets the display for zero character shift.
4. Sets the address counter to point to the DD RAM.
5. If the cursor is displayed, moves the cursor to the left most character in the top line (Line 1).
6. Sets the address counter to increment on each access of DD RAM or CG RAM.

7.3. Cursor Home

DB7	DB6	DB5	DB4	DB3	DB2	DB1	DB0	
0	0	0	0	0	0	1	*	02H to 03H

RS = 0

*: Don't care

This instruction

1. Clears the contents of the address counter to 0H.
2. Sets the address counter to point to the DD RAM.
3. Sets the display for zero character shift.
4. If the cursor is displayed, moves the left most character in the top line. (Line 1).

7.4. Entry Mode Set

DB7	DB6	DB5	DB4	DB3	DB2	DB1	DB0	
0	0	0	0	0	1	I/D	S	04H to 07H

RS = 0

The I/D bit selects the way in which the contents of the address counter are modified after every access to DD RAM or CG RAM.

I/D = 1: The address counter is incremented.

I/D = 0: The address counter is decremented.

The S bit enables display shift, instead of cursor shift, after each write or read to the DD RAM.

S = 1 : Display shift enabled.

S = 0 : Cursor shift enabled.

The direction in which the display is shifted is opposite in sense to that of the cursor. For example if S=0 and I/D=1, the cursor would shift one character to the right after a CPU writes to DD RAM. However if S=1 and I/D=1, the display would shift one character to the left and the cursor would maintain its position on the panel.

The cursor will already be shifted in the direction selected by I/D during reads of the DD RAM, irrespective of the value of S. Similarly reading and writing the CG RAM always shifts the cursor. Also both lines are shifted simultaneously.

I/D	S	After writing DD RAM data	After reading DD RAM data
0	0	The cursor moves one character to the left.	The cursor moves one character to the left.
1	0	The cursor moves one character to the right.	The cursor moves one character to the right.
0	1	The display shifts one character to the right without cursor's move.	The cursor moves one character to the left.
1	1	The display shifts one character to the left without cursor's move.	The cursor moves one character to the right.

7.5. Display ON/OFF

DB7	DB6	DB5	DB4	DB3	DB2	DB1	DB0	08H to 0FH
0	0	0	0	1	D	*	B	

RS = 0

This instruction controls various features of the display.

The D bit turns the entire display on or off.

D = 1 : Display on

D = 0 : Display off

Note : When display is turned off, power converter also inhibited and reduce a power consumption.

The B bit enables blinking of the character the cursor coincides with.

B = 1 : Blinking on

B = 0 : Blinking off

Blinking is achieved by alternating between a normal and all on display of a character.

The cursor blinks with a frequency of about 1.1 Hz and DUTY 50%.

7.6. Cursor/Display shift

DB7	DB6	DB5	DB4	DB3	DB2	DB1	DB0	10H to 1FH
0	0	0	1	S/C	R/L	*	*	

RS = 0

*: Don't care

This instruction shifts the display and/or moves the cursor, on character to the left or right, without reading nor writing DD RAM.

The S/C bit selects movement of the cursor or movement of both the cursor and the display.

S/C = 1 : Shift both cursor and display.

S/C = 0 : Shift cursor only.

The R/L bit selects leftward or rightward movement of the display and/or cursor.

R/L = 1 : Shift one character right.

R/L = 0 : Shift one character left.

Cursor move and Display shift by the "Cursor/Display Shift".

S/C	R/L	Cursor shift	Display shift
0	0	Move one character to the left	No shift
0	1	Move one character to the right	No shift
1	0	Shift one character to the left with display	Shift one character to the left
1	1	Shift one character to the right with display	Shift one character to the right

7.7. Function Set

This command sets width of data bus line by itself, and sets screen brightness by following one byte data.

7.7.1. Function Set Command

DB7	DB6	DB5	DB4	DB3	DB2	DB1	DB0	
0	0	1	IF	*	*	*	*	20H to 3FH

RS = 0

*: Don't care

This instruction initializes the system, and must be the first instruction executed after power-on.

The IF bit selects between an 8-bit or a 4-bit bus width interface.

IF = 1 : 8-bit CPU interface using DB7 to DB0

IF = 0 : 4-bit CPU interface using DB7 to DB4

7.7.2. Brightness Control

DB7	DB6	DB5	DB4	DB3	DB2	DB1	DB0	
*	*	*	*	*	*	BR1	BR0	00H to 03H

RS = 1

*: Don't care

One byte data (RS = 1) which follows the "Function Set Command" is considered as brightness data. When a command (RS = 0) is written after the "Function Set Command", the brightness control function is not initiated. Screen brightness is as follows;

BR1	BR0	Brightness
0	0	100 % (Default)
0	1	75 %
1	0	50 %
1	1	25 %

7.8. Set CG RAM Address

DB7	DB6	DB5	DB4	DB3	DB2	DB1	DB0		
0	1	ACG							40H to 7FH

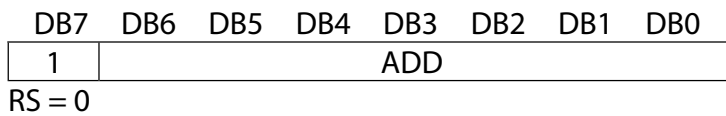
RS = 0

This instruction

1. Loads a new 6-bit address into the address counter.
2. Sets the address counter to address CG RAM.

Once the "Sets CG RAM Address" has been executed, the contents of the address counter will be automatically modified after every access of CG RAM, as determined by the "7.4 Entry Mode Set" instruction. The active width of the address counter, when it is addressing CG RAM, is 6-bits so the counter will wrap around to 00H from 3FH if more than 64 bytes of data are written to CG RAM.

7.9. Set DD RAM Address



80H to 93H (1 line), C0H to D3H (2 line), 94H to A7H (3 line), D4H to E7H (4 line)

This instruction

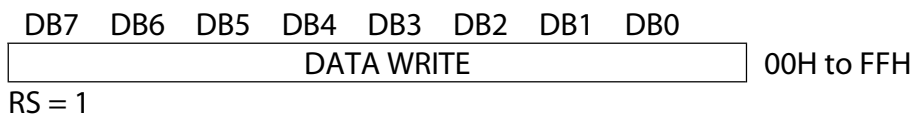
1. Loads a new 7-bit address into the address counter.
2. Sets the address counter to point to the DD RAM.

Once the "Set DD RAM Address" instruction has been executed, the contents of the address counter will be automatically modified after each access of DD RAM, as selected by the "7.4 Entry Mode Set" instruction.

Valid DD RAM Address Ranges

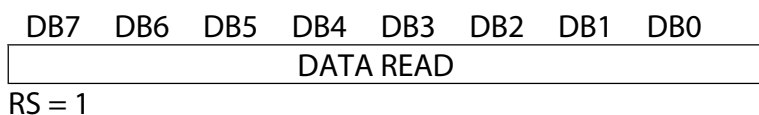
	Number of Characters	Address
1st line	20	00H to 13H
2nd line	20	40H to 53H
3rd line	20	14H to 27H
4th line	20	54H to 67H

7.10. Write Data



This instruction writes the data in DB7 to DB0 into either the CG RAM or the DD RAM. The RAM space (CG or DD), and the address in that space, that is accessed depends on whether a "Set CG RAM Address" or "Set DD RAM Address" instruction was last executed, and on the parameters of that instruction. The contents of the address counter will be automatically modified after each "Write Data", as determined by the "7.4 Entry Mode Set". When data is written to the CG RAM, the DB7, DB6 and DB5 bits are not displayed as characters.

7.11. Read Data



This instruction reads data from either CGRAM or DD RAM, depending on the type of "Set RAM Address" instructions last sent. The address in that space depends on the "Set RAM Address" instruction parameters. Immediately before executing "Read Data", "Set CG RAM Address" or "Set DD RAM Address" must be executed. The contents of the address counter are modified after each "Read Data", as determined by the "7.4 Entry Mode Set". Display shift is not executed, as described at of the "7.4 Entry Mode Set".

7.12. Read Busy Flag/Address Counter

DB7	DB6	DB5	DB4	DB3	DB2	DB1	DB0
BF	ACC						

RS = 0

Reading the instruction register yields the current value of the address counter and the busy flag. This instruction must be executed prior to any other instructions. ACC, the address counter value, will point to a location in either CG RAM or DD RAM, depending on the type of "Set RAM Address" instruction last sent.

In "Busy Flag Check" immediately after executing "Write Data" instruction, a valid address counter value can be ready as soon as BF goes low. The BF bit shows the status of the busy flag.

BF = 1 : busy.

BF = 0 : ready for next instruction, command receivable.

8. Other features

8.1. CG RAM

The display module equips CG RAM as user's are 320 bit = (5x8 bit /char) x 8 chars of store user definable character fonts. The character fonts consists of 5x7 dots with underline. The number 1-36 corresponds to character fonts.

Character code	CG RAM address						CG RAM data (character pattern)								
	DB5	DB4	DB3	DB2	DB1	DB0	DB7	DB6	DB5	DB4	DB3	DB2	DB1	DB0	
00H or (08H)	0	0	0	0	0	0	*	*	*	1	2	3	4	5	
	0	0	0	0	0	1	*	*	*	6	7	8	9	10	
	0	0	0	0	1	0	*	*	*	11	12	13	14	15	
	0	0	0	0	1	1	*	*	*	16	17	18	19	20	
	0	0	0	1	0	0	*	*	*	21	22	23	24	25	
	0	0	0	1	0	1	*	*	*	26	27	28	29	30	
	0	0	0	1	1	0	*	*	*	31	32	33	34	35	
	0	0	0	1	1	1	*	*	*	0	0	0	0	0	
01H or (09H)	0	0	1	0	0	0	*	*	*	1	2	3	4	5	
	0	0	1	0	0	1	*	*	*	6	7	8	9	10	
	0	0	1	0	1	0	*	*	*	11	12	13	14	15	
	0	0	1	0	1	1	*	*	*	16	17	18	19	20	
	0	0	1	1	0	0	*	*	*	21	22	23	24	25	
	0	0	1	1	0	1	*	*	*	26	27	28	29	30	
	0	0	1	1	1	0	*	*	*	31	32	33	34	35	
	0	0	1	1	1	1	*	*	*	0	0	0	0	0	

REMARKS; "*" : Don't care "0" : Turned off "1" : Turned on

Dot assignment

1	2	3	4	5
6	7	8	9	10
11	12	13	14	15
16	17	18	19	20
21	22	23	24	25
26	27	28	29	30
31	32	33	34	35

8.2. Power-on reset

Internal status of the module is initialized, when controller detect rising power supply up. The status are as follows:

1. Display clear

Fills the DD RAM with 20Hex (Space code).

During executing of " Display Clear " (Max 1.8mS), the busy flag (BF) is "1".

2. Sets the address counter to 0H.

Sets the address counter to point the DD RAM.

3. Display ON/OFF

D = 0 : display OFF

C = 0 : Cursor OFF

B = 0 : Blink OFF

4. Entry Mode Set

I/D = 1 : Increment (+1)

S = 0 : No display shift

5. Function Set

IF = 1 : 8-bit interface

6. Brightness Control

BR0 = BR1 = 0 : 100%

•Remarks

There is a possibility that reset doesn't work by slow start power supply causes.

Therefore the initializing by commands needs.

8.3. CPU interface

The display module is capable to communicate some different type of bus systems such as i80 or M68, 8-bit or 4-bit data.

8.3.1. Select CPU

The module is able to connected to bus of i80 type or M68 type CPU, by setting JP9 jumper.

Refer to " 8.5 Jumper " for detail.

8.3.2. 4-bit CPU interface

If 4-bit interface is used, the 8-bit instruction are written nibble by nibble: the high-order nibble being written first, followed by low-order nibble. It is necessary to check the busy flag between writing separate nibbles of individual instructions.

See " 7.7.1 Function Set Command " for more information.

8.4. Test Mode

Self test functions built into the display module. The test mode is initiated by connecting 2 and 3 pin of 3pin connector (CN2) and power up.

In the test mode, checker patterns are displayed on all character position.

In the future, there is a possibility to remove a 3 pin connector(CN2).

8.5. Jumper

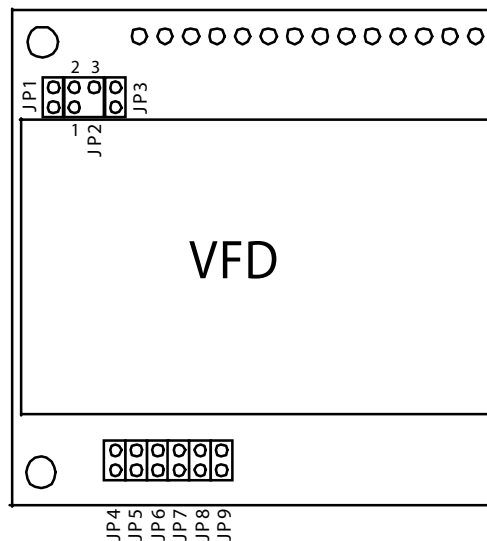
Some jumpers are prepared on the PC board, to set operating mode of the display module. A soldering iron is required to short jumper.

No2 and No3 of jumper 'JP2' is used to reset of module.

You can reset the module by shorting No2 and No3 of the jumper 'JP2' for some interval which is longer than 10us.

The following figure shows the location of each jumper.

Location:



The following table shows the function of No 1 and No 2 of JP2, JP9.

CU20045SCP B-W5J is no reset inputs from thir d hole of 14 through holes and M68 CPU bus interface. Reset input signal is active when it is low.

Table of No 1 and No 2 of JP2 setting

No 1 and No 2 of JP2	No 3 of CN1
open	NC
short	RESET

NC: no connection

Table of JP9 setting

JP9	CPU bus mode	Control signals
open	M68 type	E,R/W
short	i80 type	WR , RD

JP1, JP3 to JP8 are factory use only.

9. Character Font

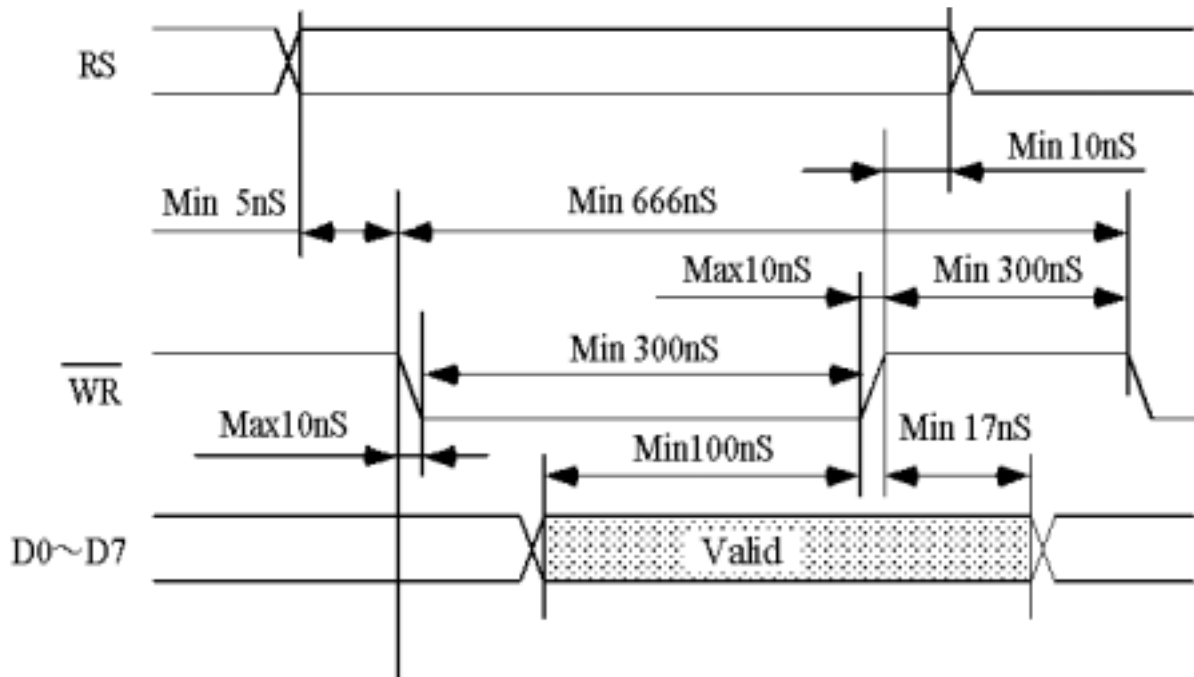
		D7	D6	D5	D4																
		0	0	0	0	0	0	0	0	1	1	1	1	1	1	1	1				
		0	0	0	0	1	1	1	1	0	0	0	0	1	1	1	1				
		0	0	1	1	0	0	1	1	0	0	1	1	0	0	1	1				
		0	1	0	1	0	1	0	1	0	1	0	1	0	1	0	1				
33	22	11	00																		
DD	DD	DD	DD	0	1	2	3	4	5	6	7	8	9	A	B	C	D	E	F		
0000	0			0	a	P	`	P	Ä	E		-	9	3	α	P					
0001	1	!	!	1	A	Q	a	q	Á	á	ä	7	7	4	ä	q					
0010	2	!"	"	2	B	R	b	r	Ä	E	7	7	4	ä	q						
0011	3	!"#	#	3	C	S	c	s	Ä	R	7	7	4	ä	q						
0100	4	!"#\$	\$	4	D	T	d	t	Ä	®	7	7	4	ä	q						
0101	5	!"#\$%	%	5	E	U	e	u	E	o	7	7	4	ä	q						
0110	6	!"#\$%&	&	6	F	V	f	v	Ü	7	7	4	ä	q							
0111	7	!"#\$%&'	'	7	G	W	g	w	ö	7	7	4	ä	q							
1000	8	!"#\$%&'((8	H	X	h	x	ø	7	7	4	ä	q							
1001	9	!"#\$%&'())	9	I	Y	i	y	ø	7	7	4	ä	q							
1010	A	!"#\$%&'() *	*	J	Z	j	z	Ü	7	7	4	ä	q								
1011	B	!"#\$%&'() * +	+	K	[k	(Ü	7	7	4	ä	q								
1100	C	!"#\$%&'() * + ,	,	L]	l	\	7	7	4	ä	q									
1101	D	!"#\$%&'() * + , -	-	M	^	m)	7	7	4	ä	q									
1110	E	!"#\$%&'() * + , - >	>	N	^	n	7	7	4	ä	q										
1111	F	!"#\$%&'() * + , - > ?	?	O	_	o	7	7	4	ä	q										

Font: G57131. cg

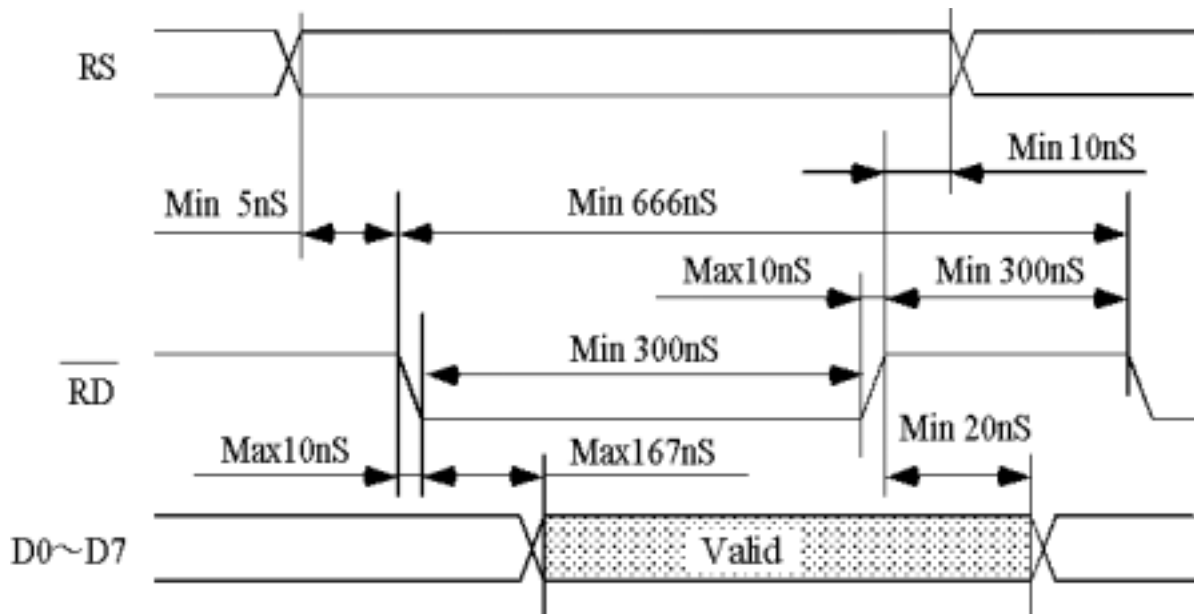
Note: Font number 00~07Hex (08~0FHex) is User Definable Character Fonts.

10. Timing

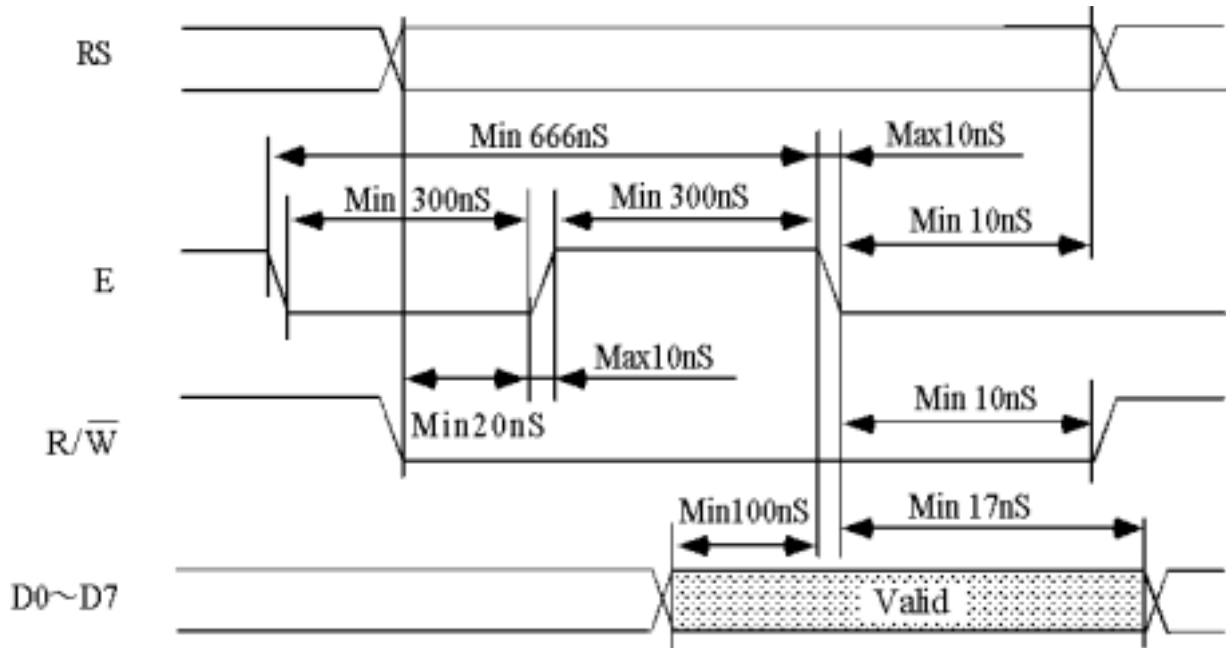
10.1. CPU bus write timing (i80 type)



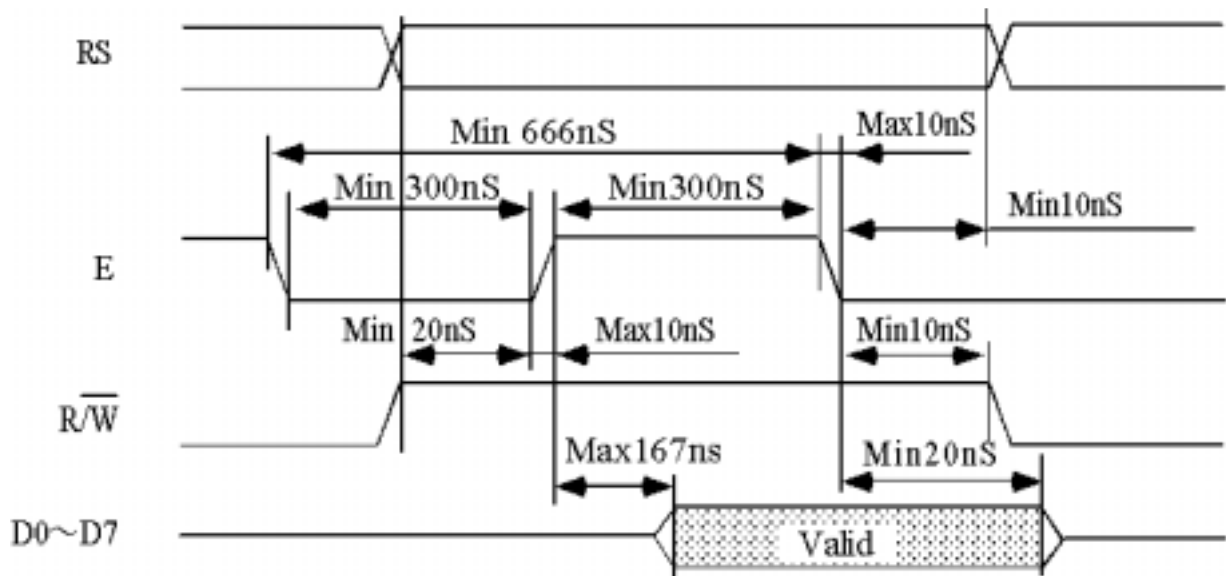
10.2. CPU bus read timing (i80 type)



10.3. CPU bus write timing (M68 type)



10.4. CPU bus read timing (M68 type)



10. Connector Pin assignment

11.1. 14pin Connector (CN1)

Fourteen (14) of through holes (CN1) are prepared for power supply and data communications. A connector or pins may be able to soldered to the holes.

No.	Terminal	No.	Terminal
1	GND	8	DB1
2	VCC	9	DB2
3	NC	10	DB3
4	RS	11	DB4
5	R/W(WR)	12	DB5
6	E(RD)	13	DB6
7	DB0	14	DB7

NC: no connection

Location and dimensions (Diameter of holes is 1.0mm)

The third through hole is for reset input when No 1 and No 2 of JP2 are short.

11.2. 3pin Connector (CN2)

A three (3) pin connector on the board is factory use only, and may be removed in future.

IMPORTANT PRECAUTIONS

- * All VFD Modules contain MOS LSIs or ICs. Anti-Static handling procedures are always required.
- * VF Display consists of Soda-lime glass. Heavy shock more than 100G, thermal shock greater than 10? /minute, direct hit with hard material to the glass surface -- especially to the EXHAUST PIPE -- may CRACK the glass.
- * Do not PUSH the display strongly. At mounting to the system frame, slight gap between display glass face and front panel is necessary to avoid a contact failure of lead pins of display. Twist or warp mounting will make a glass CRACK around the lead pin of display.
- * Neither DATA CONNECTOR or POWER CONNECTOR should be connected or disconnected while power is applied. As is often the case with most subsystems, caution should be exercised in selectively disconnecting power within a computer based system. The modules receive high logic on strobe lines as random signals on all data ports.
Removal of primary power with logic signals applied may damage input circuitry.
- * Stress more than specification listed under the Absolute Maximum Ratings may cause PERMANENT DAMAGE of the modules.
- * +5 volts power line must be regulated completely since all control logics depend on this line. Do not apply slow-start power. Provide sufficient output current power source to avoid trouble of RUSH CURRENT at power on. (At least output current of double figure of ICC, listed on the specification of each module, is required.)
- * Data cable length between module and host system is recommended within 300 mm to be free from a miss-operation caused by noise.
- * Do not place the module on the conductive plate just after the power off Due to big capacitors on the module, more than 1 min. of discharging time is required to avoid the failure caused by shorting of power line.
- * 2 hours pre-running with the test mode operation may help the stability of the brightness of the VFD when power was not applied more than 2 months.
- * Steady repeating of a fixed (static) message displaying, longer than 5 hours in a day may cause the phosphor burn-out problem. An automatic shut down Programming, scrolling message using DC2 mode or 2 hours test mode operation during the idling of the host is recommended.