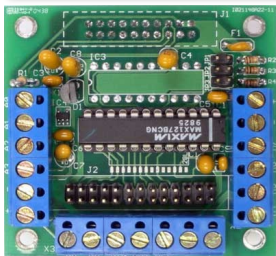




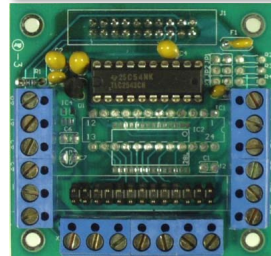
Peripherals for WillowBee on MINI-MAX/WB-1

BRD-MMP-DAQ-127 and BRD-MMP-DAQ-128



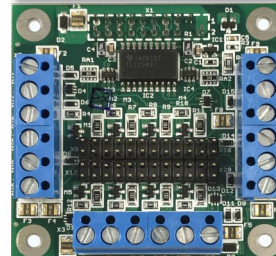
Analog In/Out
8-channel, 12-bit analog inputs and 1 channel, 10-bit analog output board. DAQ-127 has +/- 10 Volt input range

BRD-MMP-DAQ-2543-DA-1



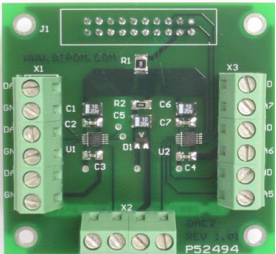
Analog In/Out
ADC/DAC peripheral board with 11 channels of 12-bit analog inputs and one channel of 10-bit analog output

BRD-MMP-DAQ-2543-LOOP-8



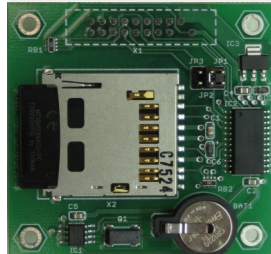
Analog In/Out
8-channel, 0 to 4V, 0-20mA or 4-20mA jumper configurable analog inputs with 12-bit resolution

BRD-MMP-DAC-8



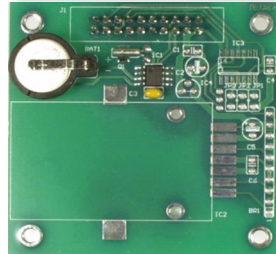
Analog Out
10-bit Digital to Analog Converter (DAC) board with 8 analog outputs

BRD-MMP-MMC-RTC-1



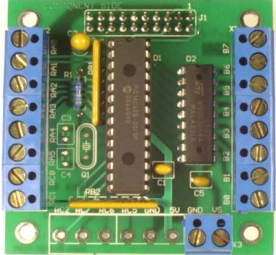
Memory/RTC
Designed for storage/data logger applications. Has a Multi Media Card (MMC/SD) socket and a battery-backed Clock/Calendar

BRD-MMP-RTC-1



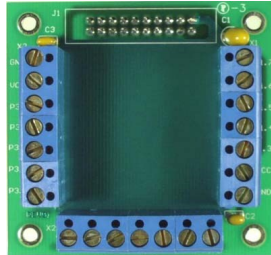
RTC
Real Time Clock/calendar board with battery backup

BRD-MMP-DIO-1



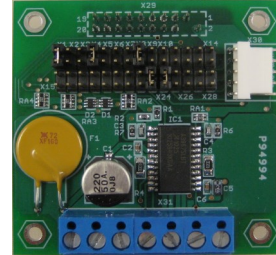
Digital In/Out
I/O expander board. Also used as standalone PIC micro-controller board

BRD-MMP-TERMINAL-1



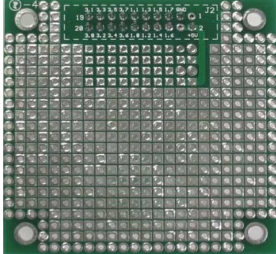
Terminals
Brings out ports of the MINI-MAX/WB to terminal blocks for easier access

BRD-MMP-MOTOR-1B



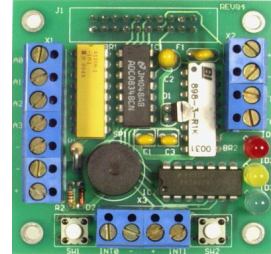
Motor Control
Universal stepper motor controller board

BRD-MMP-PROTO-1



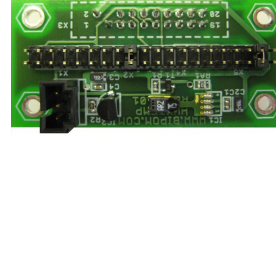
Prototyping
Prototyping board with a 20-pin universal expansion connector

BRD-MMP-TB-1



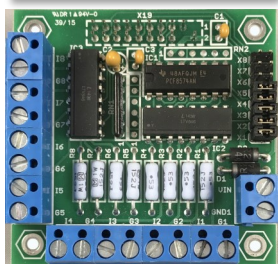
Training
Training Board with LED's, ADC, buzzer, switches, and counter/timer inputs for performing experiments with WillowBee

BRD-MMP-T-1-1820 and BRD-MMP-TH-1-SHT



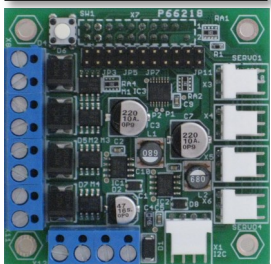
Temperature Humidity
Digital temperature sensor peripheral boards

BRD-MMP-OPTO-8-DC



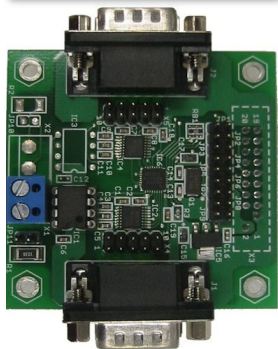
Digital In
Designed for storage/data logger applications. With SD Card socket and a battery-backed Clock/Calendar

BRD-MMP-HCD-4



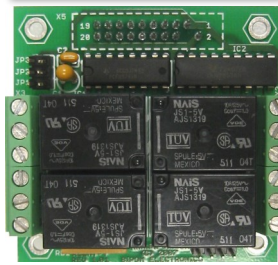
High Current Out
4-channel high current driver peripheral board

BRD-MMP-UART-2RS232



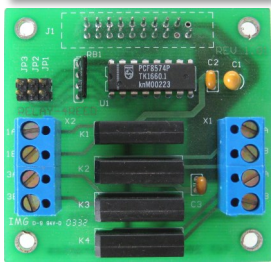
**DUAL RS232
DUAL RS485**
Communications board with two RS232 channels and two (optional) RS485 channels UART-2RS485

BRD-MMP-RELAY-4



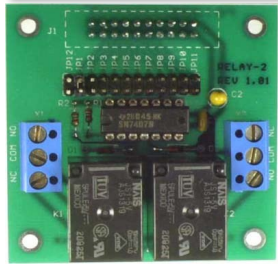
4 Relays
Relay peripheral board with 4 power relays

BRD-MMP-RELAY-4REED



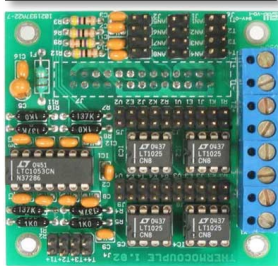
4 Relays
Relay peripheral board with 4 reed relays. Normally Open Open Contacts

BRD-MMP-RELAY-2



2 Relays
Relay peripheral board with 2 power relays. Normally Open and Normally Closed Contacts

BRD-MMP-TC-1



1 Thermocouple
1 channel thermocouple amplifier with cold-junction compensation

BRD-MMP-TC-4



4 Thermo couple
4-channel thermocouple amplifier with cold junction compensation

BRD-MMP-GPS-2



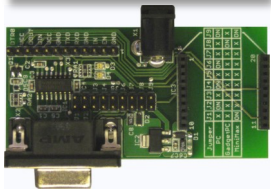
GPS
Global Positioning System (GPS) Peripheral

Standoff Kit-1



Standoff Kit
Standoff kit connects MINIMAX boards to peripherals or connects two peripheral boards applications

BRD-RS232-TTL-1



RS232 Adapter
RS232 to TTL Converter with XBee Zigbee socket