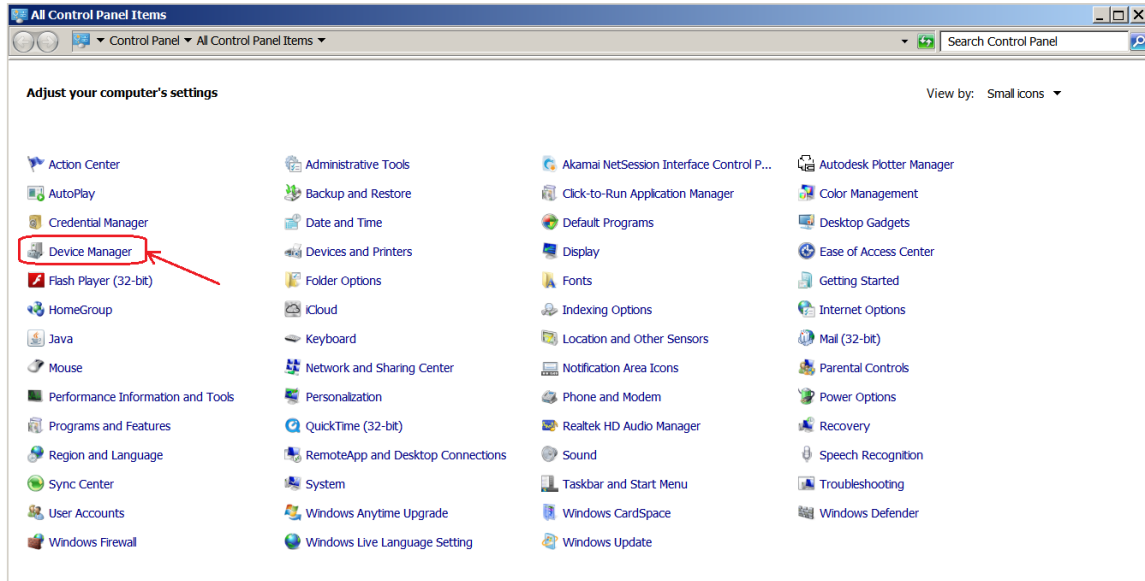


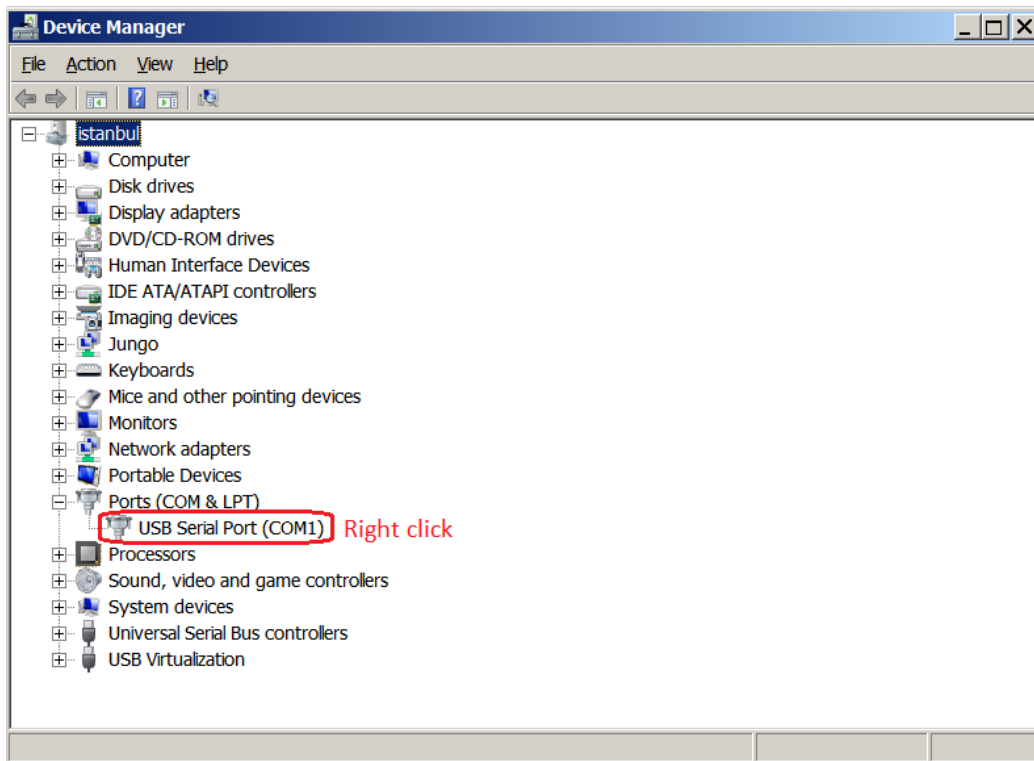
# CBL-USB-COM-1 Speed Improvements

This document shows how to drastically improve the speed of CBL-USB-COM-1 when downloading to BiPOM microcontroller boards.

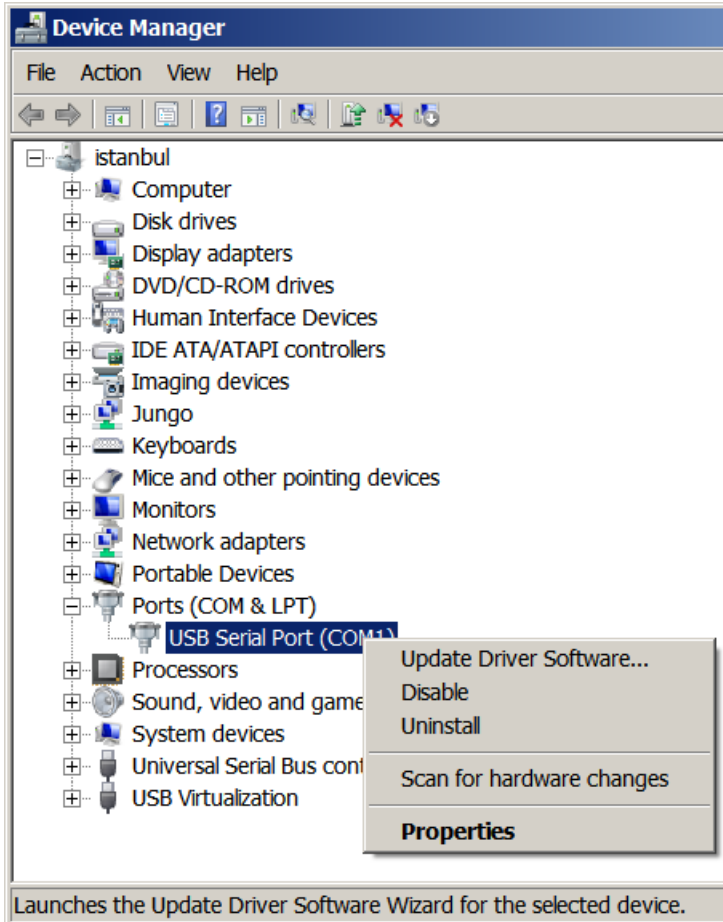
Start Windows Device Manager:



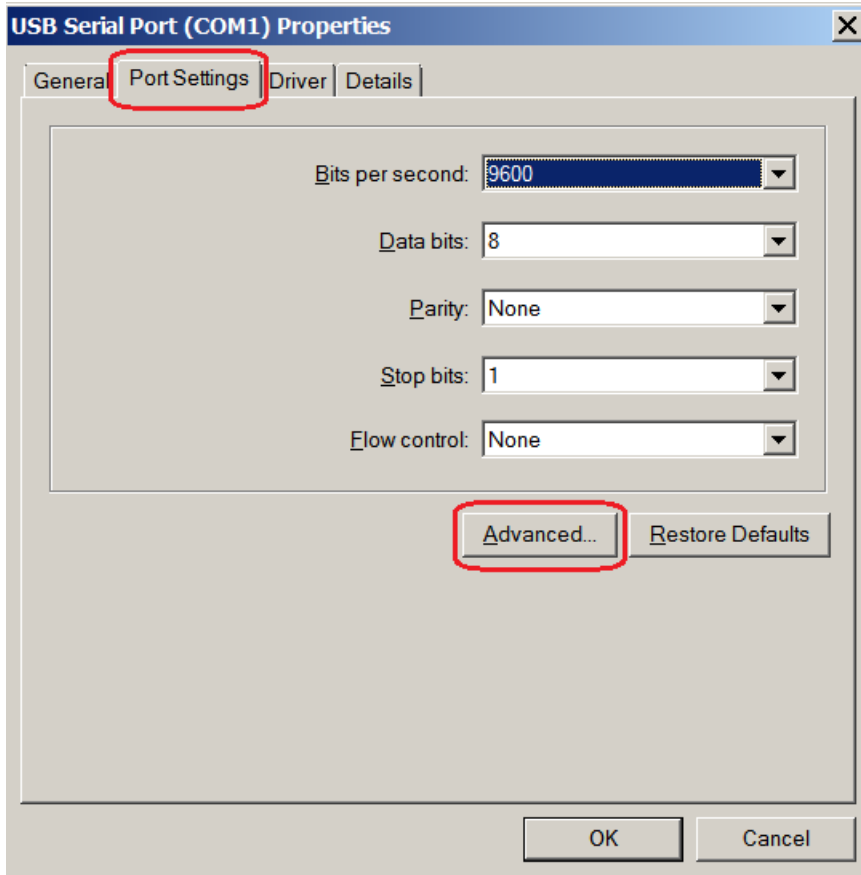
Expand Ports (COM & LPT):



Select Properties from the right-click menu:



Select Port Settings tab and click the Advanced button:



Change Latency timer setting from 16 to 2 milliseconds:

The image shows a Windows-style dialog box titled "Advanced Settings for COM1". At the top, there is a "COM Port Number:" dropdown menu set to "COM1". To the right are "OK", "Cancel", and "Defaults" buttons. Below this is a section for "USB Transfer Sizes" with instructions: "Select lower settings to correct performance problems at low baud rates. Select higher settings for faster performance." It contains two dropdown menus: "Receive (Bytes):" and "Transmit (Bytes):", both set to "4096".

There are two main sections below: "BM Options" and "Miscellaneous Options".

- BM Options:** Contains the instruction "Select lower settings to correct response problems." and a "Latency Timer (msec):" dropdown menu. The value "2" is selected and highlighted with a red rectangular box.
- Timeouts:** Contains two dropdown menus: "Minimum Read Timeout (msec):" and "Minimum Write Timeout (msec):", both set to "0".
- Miscellaneous Options:** A list of checkboxes:
  - Serial Enumerator:
  - Serial Printer:
  - Cancel If Power Off:
  - Event On Surprise Removal:
  - Set RTS On Close:
  - Disable Modem Ctrl At Startup:

If you are prompted to restart your computer, you may do so for changes to take effect. Please make sure that you have saved your data in open programs before restarting your computer.