

Skywire 4G LTE CAT 1 NA

NimbeLink, a global leader in embedded cellular modem technology and asset tracking solutions, has introduced the Skywire[®] 4G LTE CAT 1 NA modem. This Skywire modem leverages Category 1 technology. The NL-SW-LTE-TC1NAG is ideal for delivering fast reliable cellular connectivity to products with applications in North America. The modem supports GNSS, dual SIMs, a single SKU for both AT&T / Verizon networks, integrated TCP/IP stacks, plus is AT&T's FirstNet (Band 14) capable.

The NL-SW-LTE-TC1NAG is pin-compatible with all other Skywire form factor modems. This offers the flexibility of being able to use multiple module vendors in one hardware design of your end product.

Features

- Small Skywire Form-Factor
- 4G LTE Category 1 with 3G fallback
- U.FL Antenna ports for easy antenna integration
- Band 14 support – FirstNet on AT&T's network
- Dual SIM support with integrated solder down SIM and external 3FF SIM card slot
- GNSS support for GPS, Glonass, Beidou, Galileo, and QZSS
- Multi-Carrier Support on a Single Device

Advantages

- Longest Network Life
- CAT 1 LTE Speeds (Up to 10 Mb down/5 Mb up)
- Easily connect to Verizon or AT&T networks.
- Improved reception with RX diversity
- 8 Band LTE support
- Integrated GNSS support

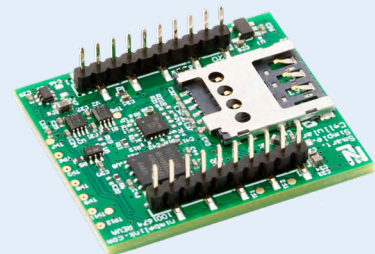


Part Number	Description
-------------	-------------

NL-SW-LTE-TC1NAG	Skywire LTE CAT 1, North America, GNSS
------------------	--

About The Skywire Family

Skywire cellular modems are designed to make cellular integration as fast and as easy as it can be. Exceptionally small, pin-compatible, and end-device certified, Skywire modems enable developers to quickly and reliably connect IoT products to cellular networks around the world. Skywire modems are backed by industry leading documentation and expert-level product support.



Technical Specifications (NL-SW-LTE-TC1NAG)

Target Region	
	North America
Compatible Carriers	AT&T, Bell, Rogers, Telus, Verizon
Cellular Technology	
LTE Category	LTE CAT 1
LTE Frequency Bands	FDD B2[1900], B4[1700], B5[850], B12[700], B13[700], B14[700], B66[1700], B71[600]
3G Technology Supported	DC-HSPA+
3G Frequency Band	B2[1900], B4[1700], B5[850]
2G Technology Supported	N/A
2G Frequency Band	N/A
Data Speeds	
Download Rate and Upload Rate	Download: LTE: 10 Mbps HSPA+: 42.0 Mbps Upload: LTE: 5 Mbps HSPA+: 5.76 Mbps
Hardware	
Form Factor	Skywire Interface
Dimensions	29mm x 33mm x 10.5mm
Weight	8 grams
Internet Protocols	
Network Stack Support	Integrated TCP/IP, UDP/IP, HTTP, FTP, SSL/TLS, SMTP, IPv4/IPv6, NITZ, PING, PPP Stacks
SMS	SMS over IMS
Location	
GNSS	GPS, Glonass, Beidou, Galileo, and QZSS
Power	
Supply Voltage	3.4V - 4.2V (3.8V Nominal)
I/O Voltage	1.65V - 5.5V
Current Consumption	Average N/A Peak N/A Idle N/A Sleep N/A
Interfaces	
Data Interface	UART, USB (USB 2.0 compliant)
USB Driver Support	OS: Windows 7 Windows 8 Windows 10 Linux Drivers: MBIM PPP RNDIS ECM QMI NMEA AT Console
RF	Primary (U.FL), Rx Diversity and MIMO DL 2x2 (U.FL)
SIM	
Type	Integrated Verizon SIM, external 3FF slot
Approvals	
Regulatory Certifications	FCC, IC, PTCRB
Carrier Approvals	AT&T (In-Progress), Verizon (In-Progress), Rogers (In-Progress), Telus (In-Progress)
Compliance	RoHS compliant
Temperature Range	
Industrial Grade	-40°C to +85°C
Support and Warranty	
	1 Year standard warranty

About NimbeLink

NimbeLink is the world's most trusted partner for cellular solutions for the Industrial Internet of Things (IIoT). The Skywire® series of cellular embedded modems, enable dramatic reduction in development and time-to-market. NimbeLink also develops and markets complete, highly configurable edge-to-enterprise Asset-Tracking Solutions.

For more information, visit [NimbeLink.com](https://nimbelink.com)

Content © 2021 NimbeLink Corp. All Right Reserved.