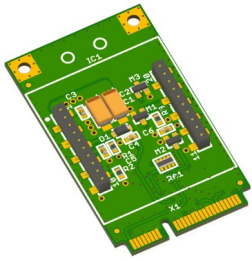




BRD-mPCIe-SW

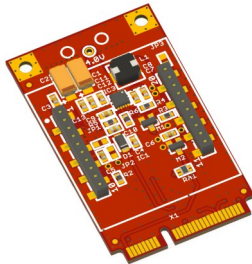
Full-size mini PCI express cellular modem adapter



- Supports NL-SW-LTE-S7588-V and NL-SW-LTE-S7618 for Verizon
- Supports NL-SW-LTE-S7588-T and NL-SW-LTE-S7648 for AT&T and T-Mobile
- Supply voltage: 3.3V from miniPCIe
- Temperature range: -40°C to +85°C
- Communication Method: USB
- Gold plated green RoHS board
- Dimensions: 51 mm x 30 mm x 12 mm

BRD-mPCIe-X

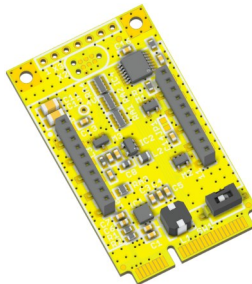
Full-size mini PCI express cellular modem adapter



- Supports all NL-SW series modems, except NL-SW-HSPA
- Supply voltage: 3.3V from miniPCIe
- Generates 4 Volts for modem power
- Temperature range: -40°C to +85°C
- Communication Method: USB
- Gold plated red RoHS board
- Dimensions: 51 mm x 30 mm x 12 mm

BRD-mPCIe-X2

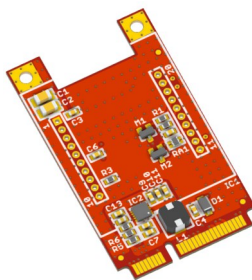
Full-size mini PCI express cellular modem adapter



- Advanced version of BRD-mPCIe-X
- On-board microcontroller with ON/OFF pin timing for sleep mode
- Works with all NL-SW series modems
- Supply voltage: 3.3V from miniPCIe
- Generates 4 Volts for modem power
- Supports fast shutdown on some modems
- Temperature range: -40°C to +85°C
- Communication Method: USB
- Gold plated yellow RoHS board
- Dimensions: 51 mm x 30 mm x 12 mm

BRD-mPCIe-X-NS

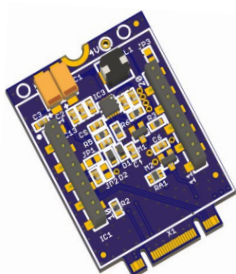
Full-size mini express low-profile cellular modem adapter



- Supports all NL-SW series modems, except NL-SW-HSPA
- Modems is soldered down directly for low overall height
- Available with modem pre-soldered or without modem
- Supply voltage: 3.3V from miniPCIe
- Generates 4 Volts for modem power
- Temperature range: -40°C to +85°C
- Communication Method: USB
- Gold plated red RoHS board
- Dimensions: 51 mm x 30 mm x 9.2 mm

BRD-M2-X

M.2 cellular modem adapter with B+M keying



- Supports all NL-SW series modems, except NL-SW-HSPA
- Supply voltage: 3.3V from M.2
- Generates 4 Volts for modem power
- Temperature range: -40°C to +85°C
- Communication Method: USB
- Gold plated blue RoHS board
- Dimensions: 42 mm x 30 mm x 12 mm

Detailed technical information can be found at www.bipom.com

BiPOM Electronics • Telephone: 1-713-283-9970 (USA) 0850-30-24-766 (TUR) • E-mail: info@bipom.com • Web: www.bipom.com

© 2021 BiPOM Electronics, Inc. All trademarked products in this brochure are the property of their respective owners.



PART NUMBER	DESCRIPTION
BRD-mPCIe-SW	Only for Sierra module based Skywire modems
BRD-mPCIe-X	All Skywire modems (except NL-SW-HSPA)
BRD-M2-X	All Skywire modems (except NL-SW-HSPA)
BRD-mPCIe-X2	All Skywire modems
BRD-mPCIe-X-NS	No Socket, No modem, Customer solders modem
BRD-mPCIe-X-NS-S7588-T-C	With CAT4 NL-SW-LTE-S7588-T-C Modem AT&T,T-Mobile
BRD-mPCIe-X-NS-S7588-V-B	With CAT4 NL-SW-LTE-S7588-V-B Verizon Modem
BRD-mPCIe-X-NS-7618RD	With CAT1 Verizon Modem
BRD-mPCIe-X-NS-7648	With CAT1 AT&T Modem
BRD-mPCIe-X-NS-QBG95	With LTE-M/NB-IoT Modem
BRD-mPCIe-X-NS-QBG96	With LTE-M/NB-IoT Modem
BRD-mPCIe-X-NS-TC4NAG	With LTE CAT4 North America
BRD-mPCIe-X-NS-TC4EU	With LTE CAT4 Europe
BRD-mPCIe-X-NS-TC4APG	With LTE CAT4 Asia-Pasific

Detailed technical information can be found at www.bipom.com

BiPOM Electronics • Telephone: 1-713-283-9970 (USA) 0850-30-24-766 (TUR) • E-mail: info@bipom.com • Web: www.bipom.com

© 2021 BiPOM Electronics, Inc. All trademarked products in this brochure are the property of their respective owners.